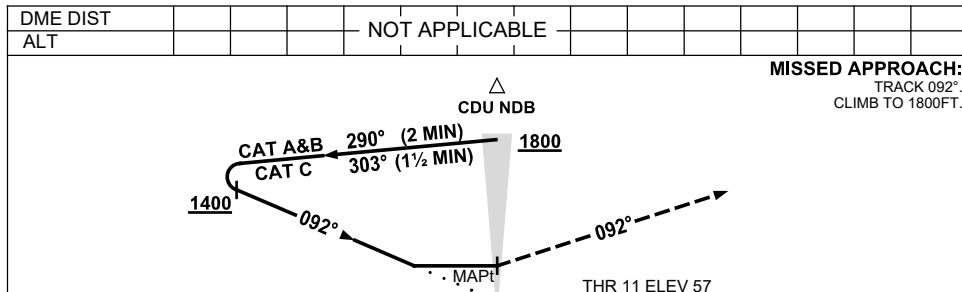
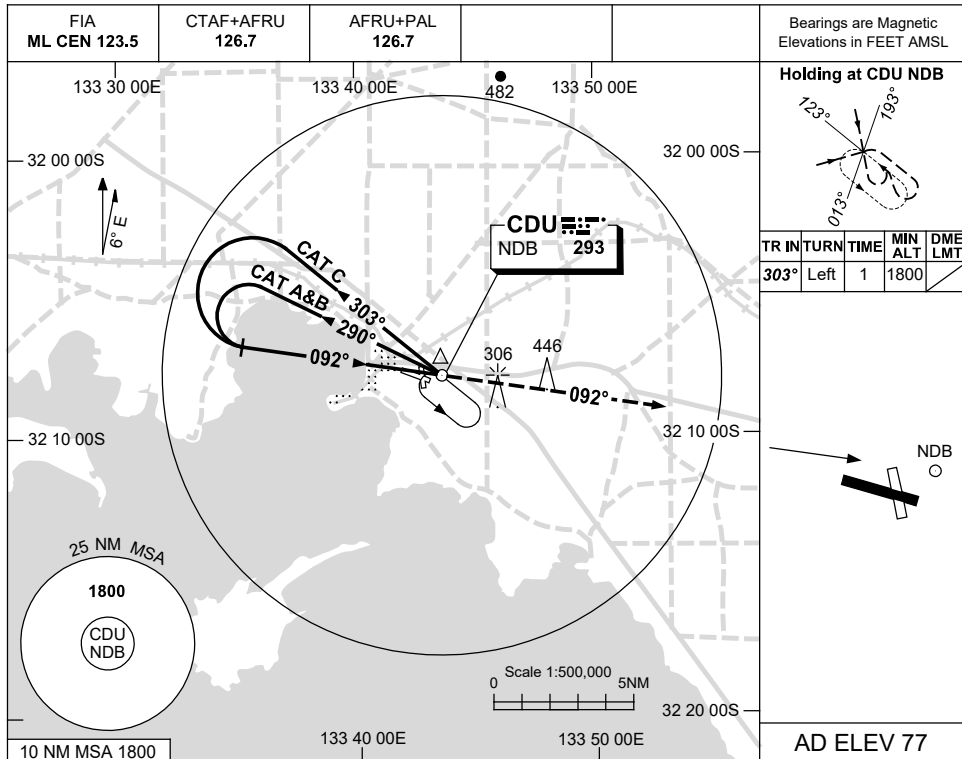


USE QNH

NDB RWY 11
CEDUNA, SA (YCDU)

30 NOV 2023



NOTES

CATEGORY	A	B	C	D
S-I NDB	660 (603-3.4)			NOT APPLICABLE
CIRCLING	710 (633-2.4)	940 (863-4.0)		
ALTERNATE	(1133-4.4)		(1363-6.0)	

1. MAX IAS:
INITIAL : 210KT.
2. AWIS (PHONE)
08 8150 3801

Changes: AFRU+PAL.

CDUNB01-177