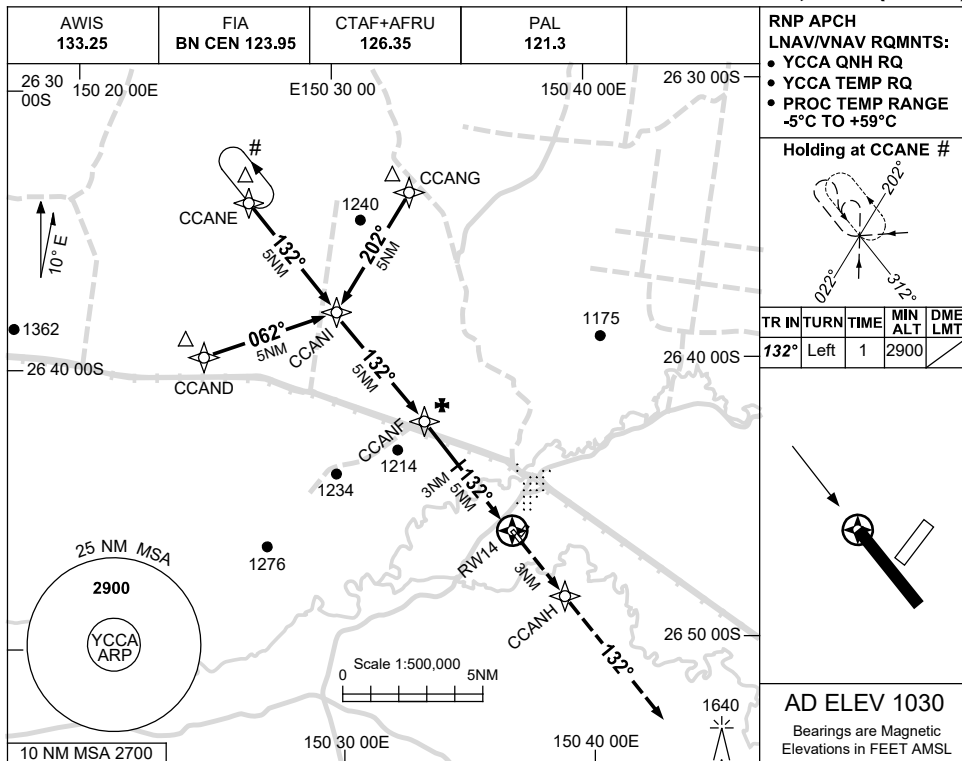


USE QNH

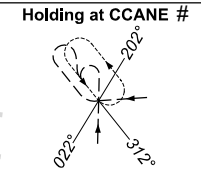
RNP RWY 14

**CHINCHILLA, QLD (YCCA)**

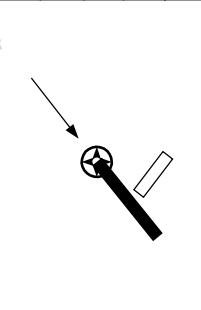
16 JUN 2022



RNP APCH  
LNAV/VNAV RQMNTS:  
• YCCA QNH RQ  
• YCCA TEMP RQ  
• PROC TEMP RANGE  
-5°C TO +59°C

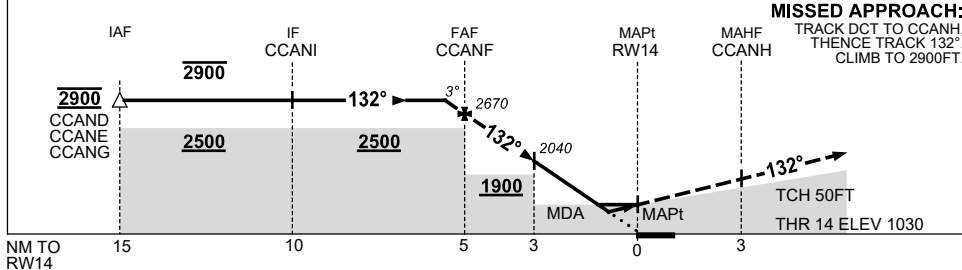


TR IN	TURN	TIME	MIN ALT	DME LMT
132°	Left	1	2900	



AD ELEV 1030  
Bearings are Magnetic  
Elevations in FEET AMSL

NM TO NEXT WPT	0.7	CCANF	4	3	2	1.4	0.8	RW14					
ALT (3° APCH PATH)	2900	2670	2350	2040	1720	1530	1340						



**MISSED APPROACH:**  
TRACK DCT TO CCANH,  
THENCE TRACK 132°.  
CLIMB TO 2900FT.

TCH 50FT  
THR 14 ELEV 1030

**NOTES**

CATEGORY	A	B	C	D
LNAV/VNAV		1340 (310-1.7)		NOT APPLICABLE
LNAV		1530 (500-2.8)		
CIRCLING	1630 (600-2.4)		1810 (780-4.0)	
ALTERNATE	(1100-4.4)		(1280-6.0)	

- MAX IAS:  
INITIAL : 210KT.
- CAUTION: HLDG NOT  
ABV 2900FT DUE TO  
OVERLYING PROC AT  
YMLS.

Changes: CHART TITLE, PBN SPECIFICATION BOX.

CCAGN01-171