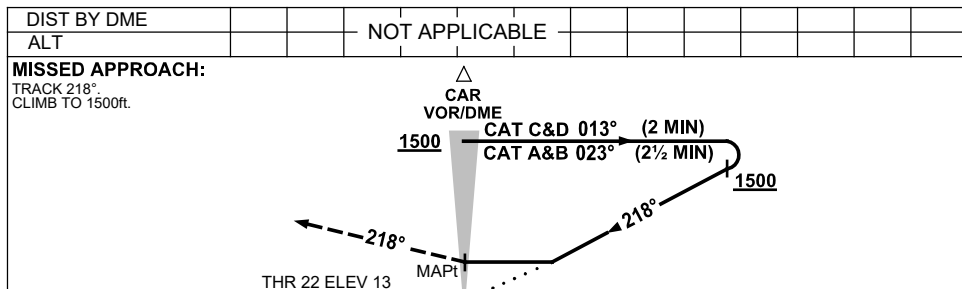
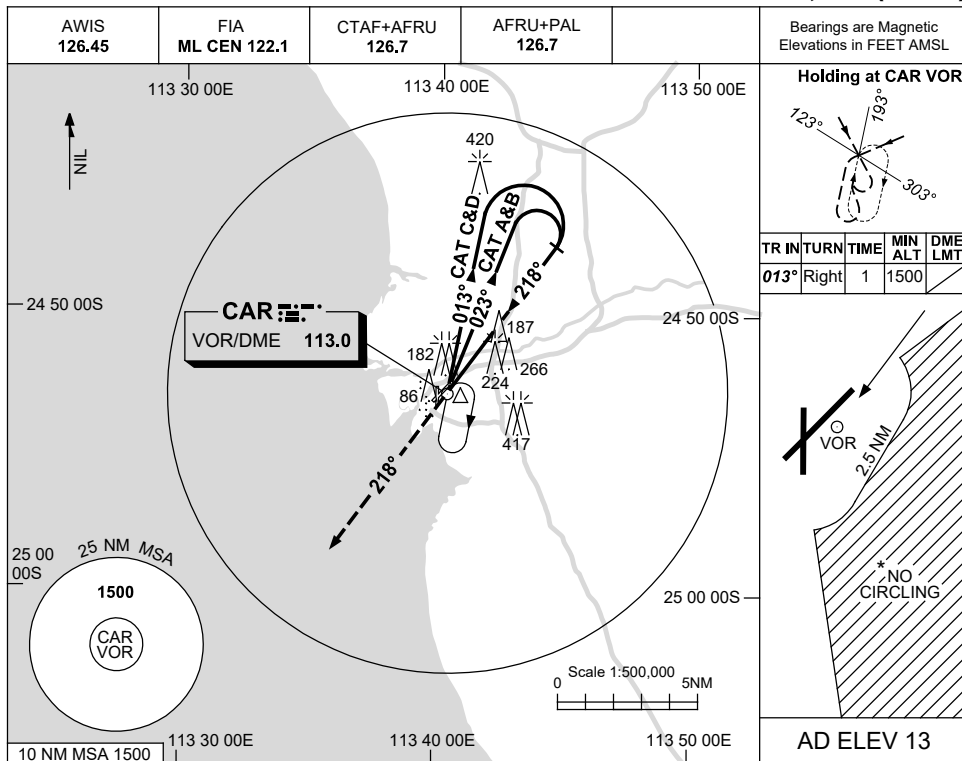


USE QNH

VOR-Y RWY 22
CARNARVON, WA (YCAR)

21 MAR 2024



NOTES

1. MAX IAS: INITIAL : 210KT.
- * 2. NO CIRCLING IN SECTOR EAST OF RWY 22 & RWY 36 BEYOND 2.5NM.

CATEGORY	A	B	C	D
S-I VOR	630 (617-3.5)			
CIRCLING*	670 (657-2.4)	760 (747-4.0)	810 (797-5.0)	
ALTERNATE	(1157-4.4)	(1247-6.0)	(1297-7.0)	

Changes: CIRCLING MINIMA, REVERSAL ALT, 420FT TOWER, 266FT TOWER.

CARVO02-178