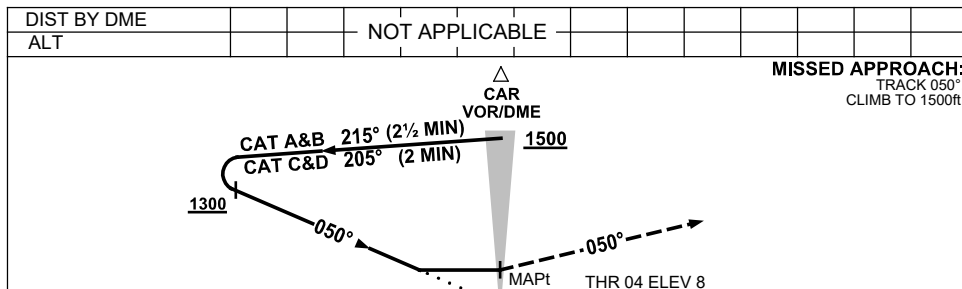
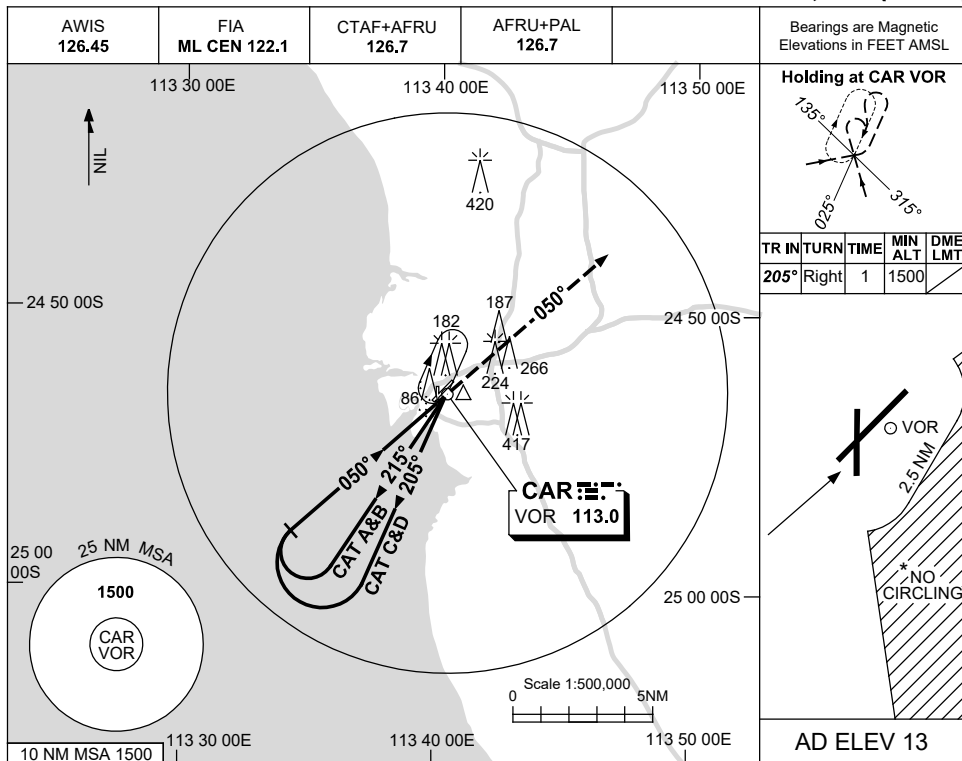


USE QNH

VOR-Y RWY 04  
**CARNARVON, WA (YCAR)**

21 MAR 2024



NM TO CAR DME

**NOTES**

CATEGORY	A	B	C	D
S-I VOR	<b>600 (587-3.3)</b>			
CIRCLING *	<b>670 (657-2.4)</b>	<b>760 (747-4.0)</b>	<b>810 (797-5.0)</b>	
ALTERNATE	(1157-4.4)	(1247-6.0)	(1297-7.0)	

1. MAX IAS:  
INITIAL : 210KT.
- \* 2. NO CIRCLING IN  
SECTOR EAST OF  
RWY 22 & RWY 36  
BEYOND 2.5NM.

Changes: CIRCLING MINIMA, 420FT TOWER, 266FT TOWER.

CARVO01-178