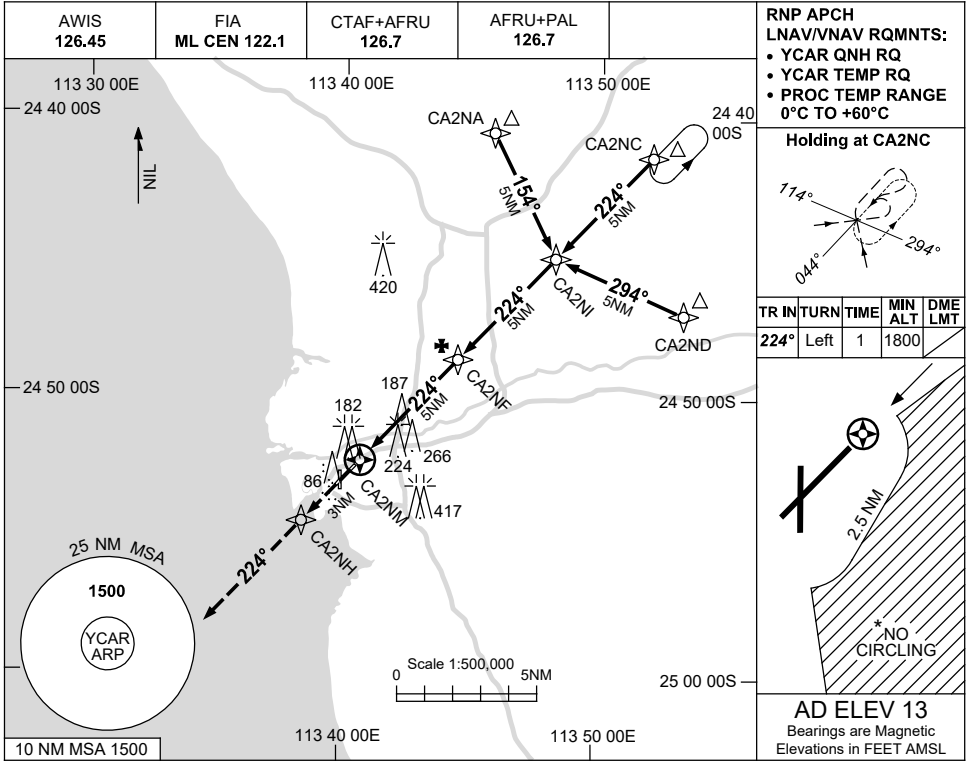


USE QNH

RNP RWY 22

CARNARVON, WA (YCAR)

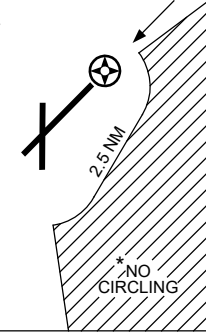
21 MAR 2024



RNP APCH
LNAV/VNAV RQMNTS:
• YCAR QNH RQ
• YCAR TEMP RQ
• PROC TEMP RANGE
0°C TO +60°C

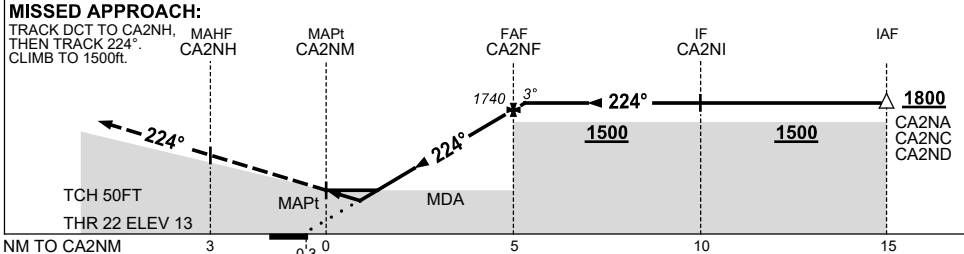


TR IN	TURN	TIME	MIN ALT	DME LMT
224°	Left	1	1800	



AD ELEV 13
Bearings are Magnetic
Elevations in FEET AMSL

NM TO NEXT WPT	CA2NM	0.6	1.2	2	3	4	CA2NF	0.2			
ALT (3° APCH PATH)		350	540	790	1100	1420	1740	1800			



NOTES

CATEGORY	A	B	C	D
LNAV/VNAV		350 (337-1.9)		
LNAV		540 (527-3.0)		
CIRCLING *	670 (657-2.4)		760 (747-4.0)	810 (797-5.0)
ALTERNATE	(1157-4.4)		(1247-6.0)	(1297-7.0)

- MAX IAS: INITIAL : 210KT.
- NO CIRCLING IN SECTOR EAST OF RWY 22 & RWY 36 BEYOND 2.5NM.

Changes: CIRCLING MINIMA, 420FT TOWER, 266FT TOWER.

CARGN02-178