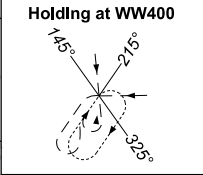
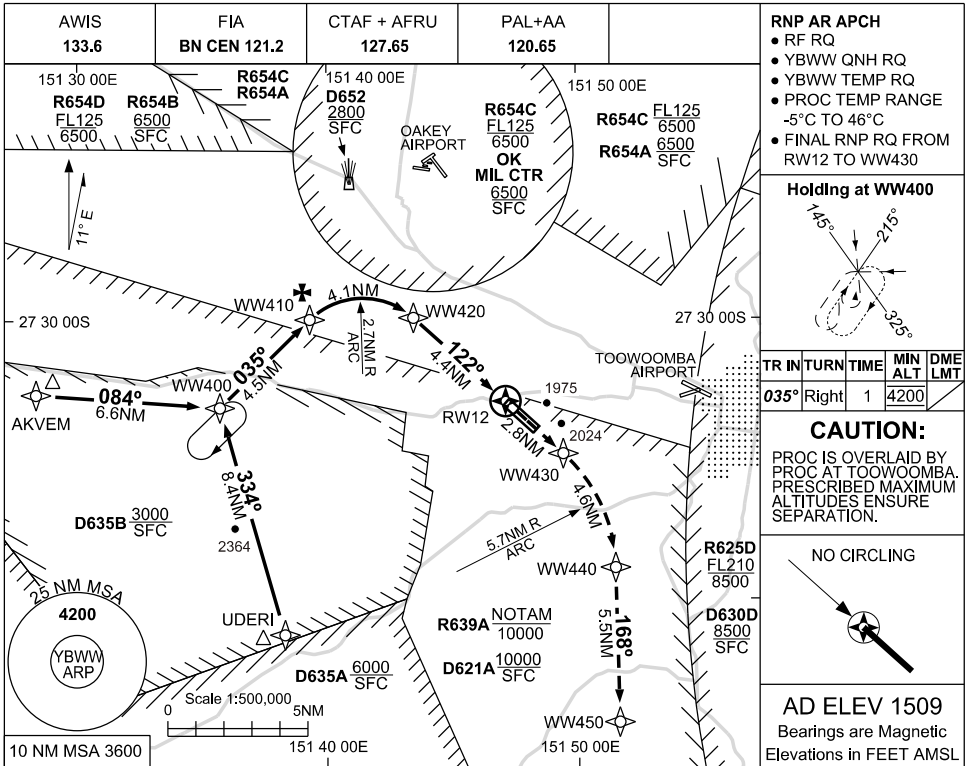


FOR CASA APPROVED OPERATORS ONLY

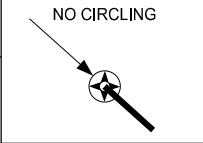
USE QNH  
RNP X RWY 12 (AR)  
BRISBANE WEST WELLCAMP, QLD (YBWW)

16 JUN 2022



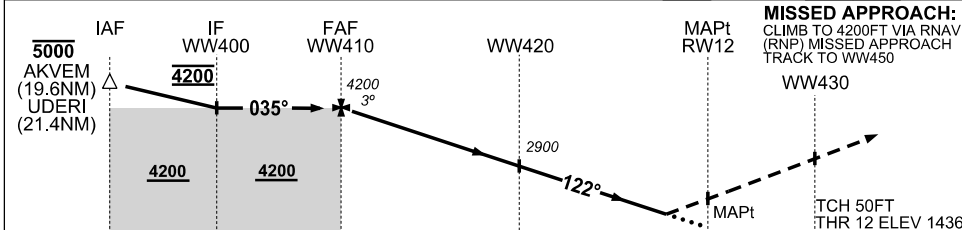
TR IN	TURN	TIME	MIN ALT	DME LMT
035°	Right	1	4200	

**CAUTION:**  
PROC IS OVERLAID BY PROC AT TOOWOOMBA. PRESCRIBED MAXIMUM ALTITUDES ENSURE SEPARATION.



**AD ELEV 1509**  
Bearings are Magnetic  
Elevations in FEET AMSL

NM TO NEXT WPT	WW410	3	2	1	WW420	4	3	2	1	RW12
ALT (3° APCH PATH)	4200	3850	3530	3220	2900	2760	2440	2120	1820	



**NOTES**

1. MAX IAS:  
INITIAL UDERI : 220KT  
HOLDING WW400 : 200KT
2. TRANSITION TO MISSED APPROACH RNP FOR LATERAL GUIDANCE MUST NOT BE INITIATED PRIOR TO THE ALONG-TRACK POSITION OF THE DA/H
3. PAPI NOT COINCIDENT WITH VPA
4. PRD OPR HR VIA NOTAM EXCEPT D652 : H24 D635AB: HJ

CATEGORY	A	B	C	D
RNP (0.3)		1920 (484 - 2.6)		
RNP (0.23)		1820 (384 - 2.2)		
CIRCLING	NOT AUTHORISED			
ALTERNATE	(1419 - 4.4)		(1609 - 6.0)	(1609 - 7.0)

Changes: R654ABCD, OK MIL CTR

BWWGN04-171