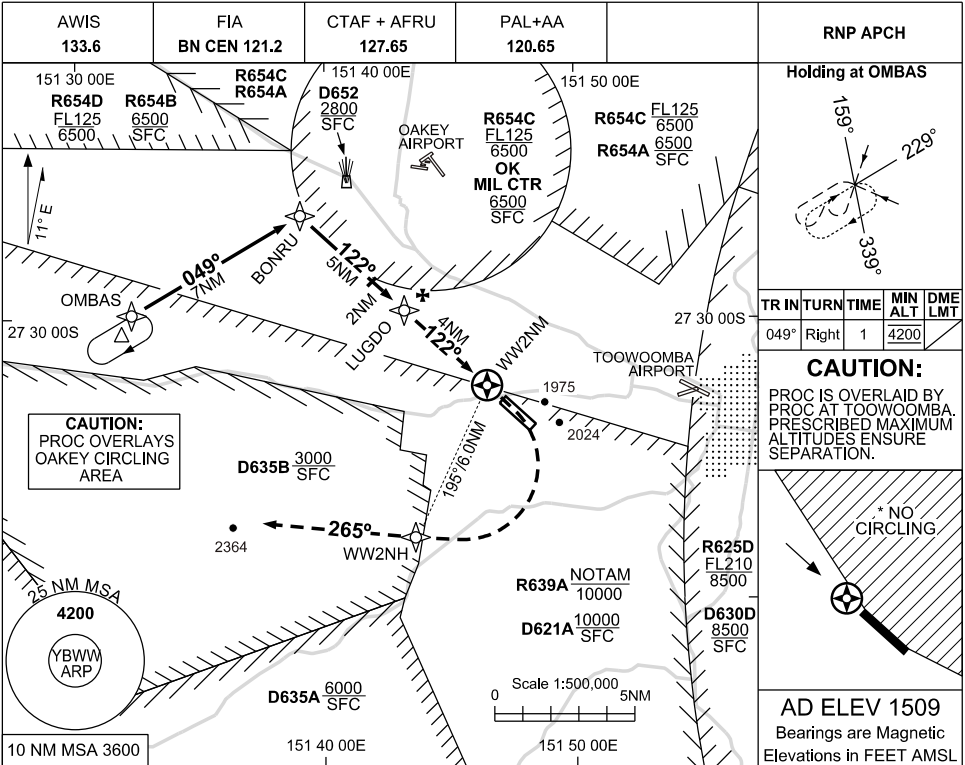


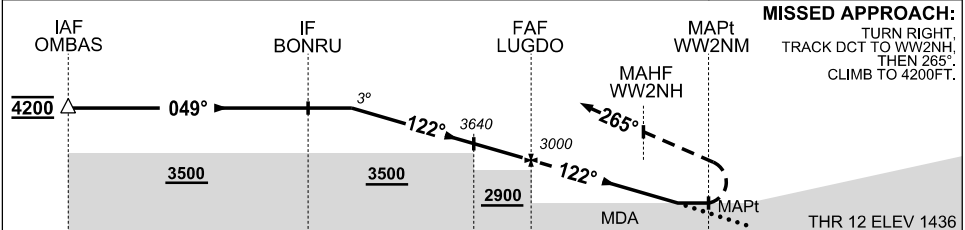
16 JUN 2022

USE QNH  
BRISBANE WEST WELLCAMP, QLD (YBWW)

RNP Y RWY 12



NM TO NEXT WPT	3.8	3	2	1	LUGDO	3	2	1.1	1	0.8	WW2NM			
ALT (3° APCH PATH)	4200	3960	3640	3320	3000	2680	2360	2090	2040	1980				



NM TO WW2NM

CATEGORY	A	B	C	D
LNAV (2.5% MAP)		2090	(654 - 3.6)	
LNAV (5% MAP) #		1980	(544 - 3.0)	
CIRCLING *	2430	(921 - 2.4)	NOT AUTHORISED	
ALTERNATE		(1421 - 4.4)	(1611 - 6.0)	(1611 - 7.0)

**MISSED APPROACH:**  
TURN RIGHT,  
TRACK DCT TO WW2NH,  
THEN 285°,  
CLIMB TO 4200FT.

- NOTES**
- MAX IAS HOLDING INITIAL & MAP : 210KT.
  - NO CIRCLING EAST OF RWY 12/30.
  - MIN MAP GRAD 5% TO 2500FT, THEN 2.5%.
  - PROC NOT AVBL WHEN YBOK AIRSPACE ACTIVE.
  - PRD OPR HR VIA NOTAM EXCEPT D652: H24 D835AB: HJ

Changes: R654ABCD, OK MIL CTR

BWWGN01-171