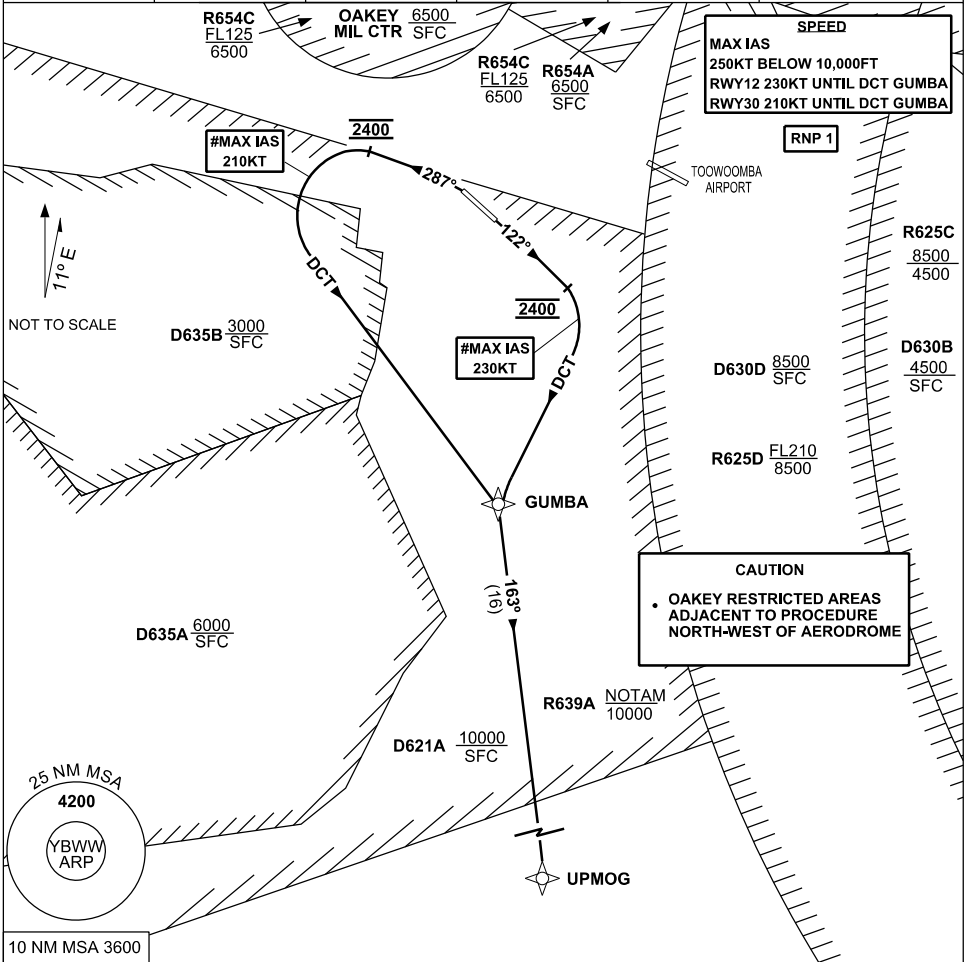


**STANDARD INSTRUMENT DEPARTURE (SID)
RWYS SOUTH (RNAV)
BRISBANE WEST WELLCAMP, QLD (YBWW)**

16 JUN 2022

AWIS 133.6	FIA BN CEN 121.2	CTAF+AFRU 127.65	PAL+AA 120.65	Bearings are Magnetic Elevations in FEET AMSL
---------------	---------------------	---------------------	------------------	--



<p>UPMOG ONE DEPARTURE</p> <p>RWY 12</p> <p># MAX IAS 230KT UNTIL tracking DCT GUMBA GRAD 5% to 2400FT, thence 3.3%</p> <ul style="list-style-type: none"> Track 122° AT 2400FT turn RIGHT track DCT to GUMBA Track 163° to UPMOG Intercept flight planned route 	<p>RWY 30</p> <p># MAX IAS 210KT UNTIL tracking DCT GUMBA GRAD 6% to 2400FT, thence 3.3%</p> <ul style="list-style-type: none"> NOT BEFORE DER turn LEFT Track 287° AT 2400FT turn LEFT track DCT to GUMBA Track 163° to UPMOG Intercept flight planned route
---	---

Changes: R654ABCD, OK MIL CTR

BWWDP04-171