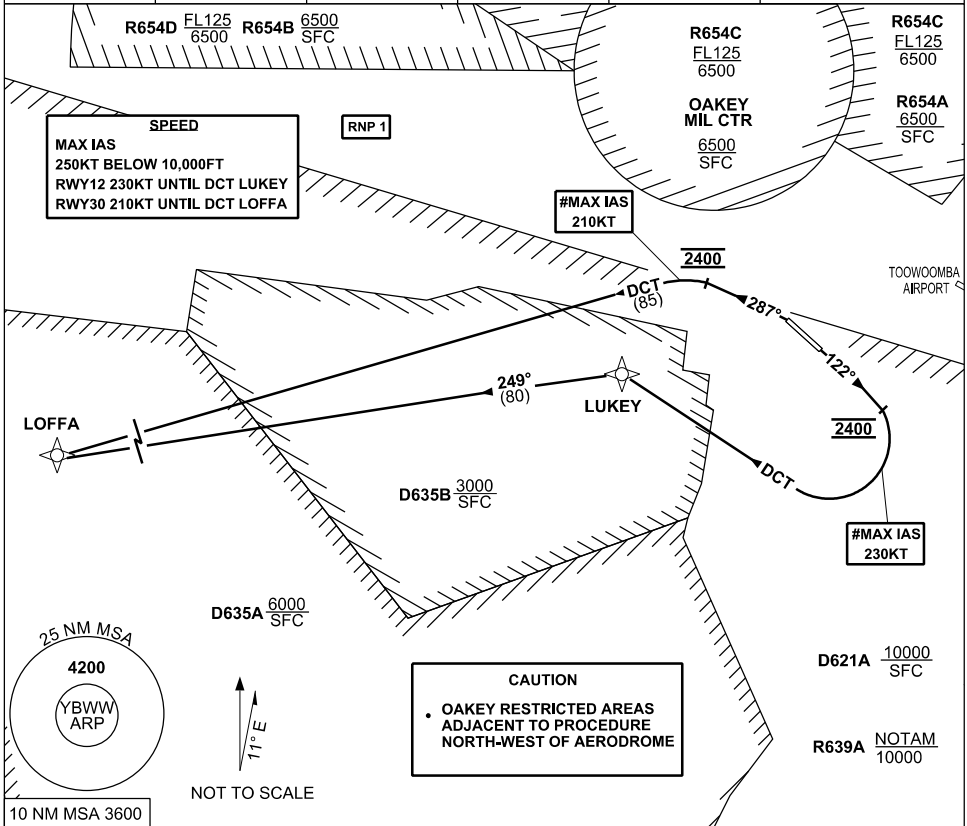


**STANDARD INSTRUMENT DEPARTURE (SID)
RWYS WEST (RNAV)
BRISBANE WEST WELLCAMP, QLD (YBWW)**

16 JUN 2022

AWIS 133.6	FIA BN CEN 121.2	CTAF+AFRU 127.65	PAL+AA 120.65		Bearings are Magnetic Elevations in FEET AMSL
---------------	---------------------	---------------------	------------------	--	--



LOFFA ONE DEPARTURE

RWY 12

- # **MAX IAS** 230KT UNTIL tracking DCT LUKEY
- GRAD 5% to 2400FT, thence 3.3%
- Track 122°
- **AT** 2400FT turn **RIGHT** track DCT to LUKEY
- Turn **LEFT** Track 249° to LOFFA
- Intercept flight planned route

RWY 30

- # **MAX IAS** 210KT UNTIL tracking DCT LOFFA
- GRAD 6% to 2400FT, thence 3.3%
- **NOT BEFORE DER** turn **LEFT** Track 287°
- **AT** 2400FT turn **LEFT** track DCT to LOFFA
- Intercept flight planned route

Changes: R654ABCD, OK MIL CTR

BWWDP03-171