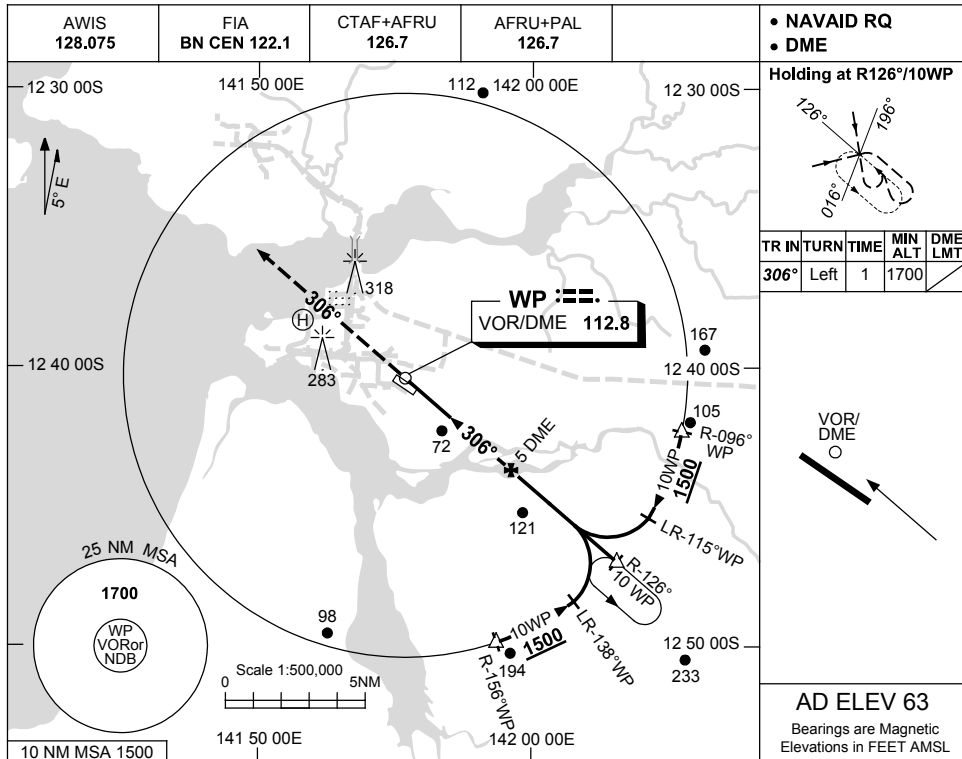


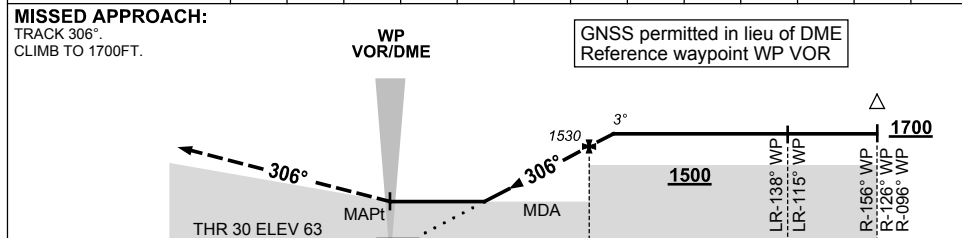
USE QNH

VOR-Z RWY 30  
WEIPA, QLD (YBWP)

25 MAR 2021



DIST BY DME	2.1	2.5	3	4	5	5.5						
ALT (3° APCH PATH)	610	740	890	1210	1530	1700						



**NOTES**

CATEGORY	A	B	C	D
S-I VOR/DME	<b>610 (547-3.0)</b>			
CIRCLING	<b>740 (677-2.4)</b>	<b>830 (767-4.0)</b>	<b>860 (797-5.0)</b>	
ALTERNATE	(1177-4.4)	(1267-6.0)	(1297-7.0)	

1. MAX IAS:  
INITIAL : 210KT.

Changes: 283FT SINGLE LIT OBST, 318FT LIT OBST.

BWPVO02-166