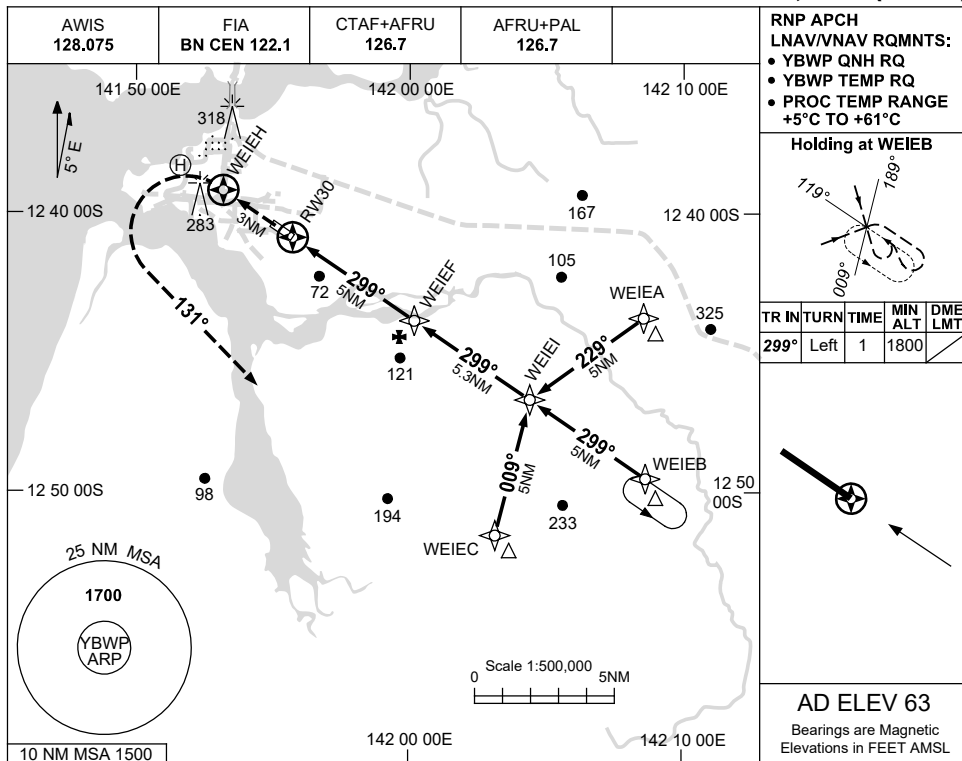


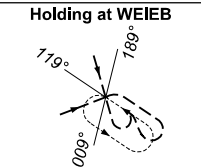
USE QNH

RNP RWY 30
WEIPA, QLD (YBWP)

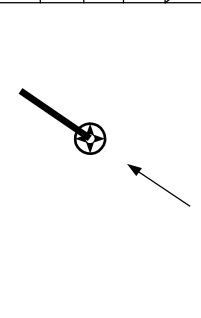
24 MAR 2022



RNP APCH
LNAV/VNAV RQMNTS:
• YBWP QNH RQ
• YBWP TEMP RQ
• PROC TEMP RANGE
+5°C TO +61°C

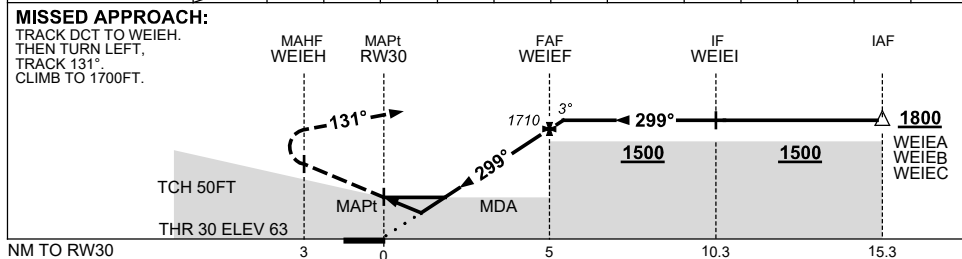


TR	IN	TURN	TIME	MIN ALT	DME LMT
299°	Left	1	1800		



AD ELEV 63
Bearings are Magnetic
Elevations in FEET AMSL

NM TO NEXT WPT	RW30	1	1.5	1.6	2	3	4	WEIEF	0.3
ALT (3° APCH PATH)		430	610	620	750	1070	1390	1710	1800



NOTES

CATEGORY	A	B	C	D
LNAV/VNAV	430 (367-2.1)			
LNAV	620 (557-3.2)			
CIRCLING	740 (677-2.4)	830 (767-4.0)		860 (797-5.0)
ALTERNATE	(1177-4.4)		(1267-6.0)	(1297-7.0)

1. MAX IAS:
INITIAL : 210KT.

Changes: CHART TITLE, PBN SPECIFICATION BOX.

BWPGN02-170