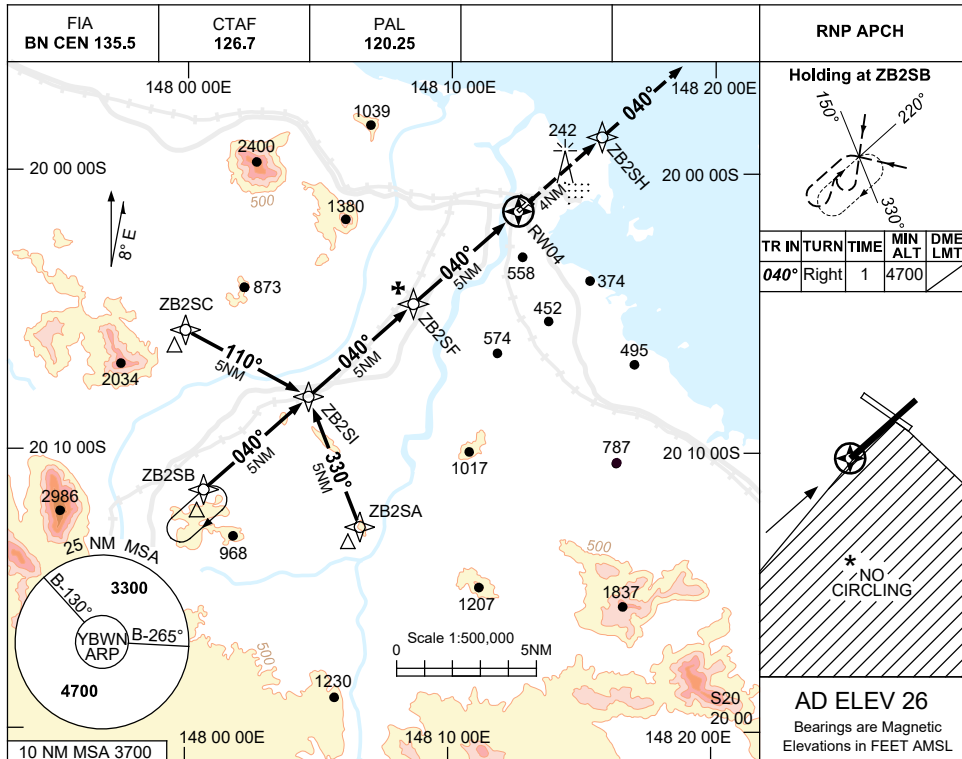


USE QNH

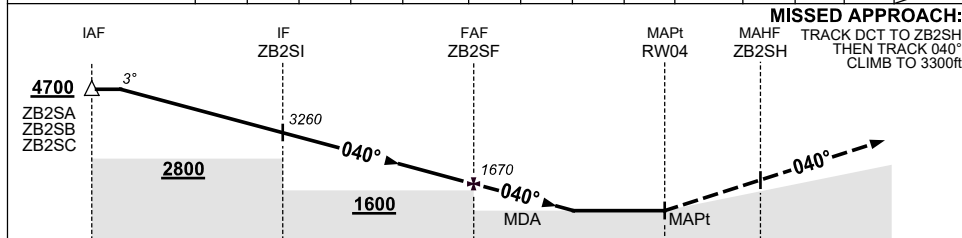
RNP S

BOWEN, QLD (YBWN)

21 MAR 2024



NM TO NEXT WPT	4.5	3	2	1	ZB2SI	4	3	2	1	ZB2SF	4	3.1	2.8	RW04
ALT (3° APCH PATH)	4700	4220	3900	3580	3260	2940	2620	2310	1990	1670	1350	1070	970	



MISSED APPROACH:
 TRACK DCT TO ZB2SH,
 THEN TRACK 040°,
 CLIMB TO 3300ft.

- NOTES**
- MAX IAS: INITIAL : 210KT.
 - NO CIRCLING IN SECT S OF RWY 04/22 AND RWY 12/30.
 - HLDG OVERLAPS WITH YBPN RNP RWY 11 HLDG. ACFT SEPERATION NOT ASSURED.
 - COLOUR: SEE SPEC NOTICES.

CATEGORY	A	B	C	D
CIRCLING *	970 (944-2.4)		1070(1044-4.0)	
ALTERNATE	(1444-4.4)		(1544-6.0)	

NOT APPLICABLE

Changes: WPT NAMING CONVENTION, NOTES.

BWNGN01-178