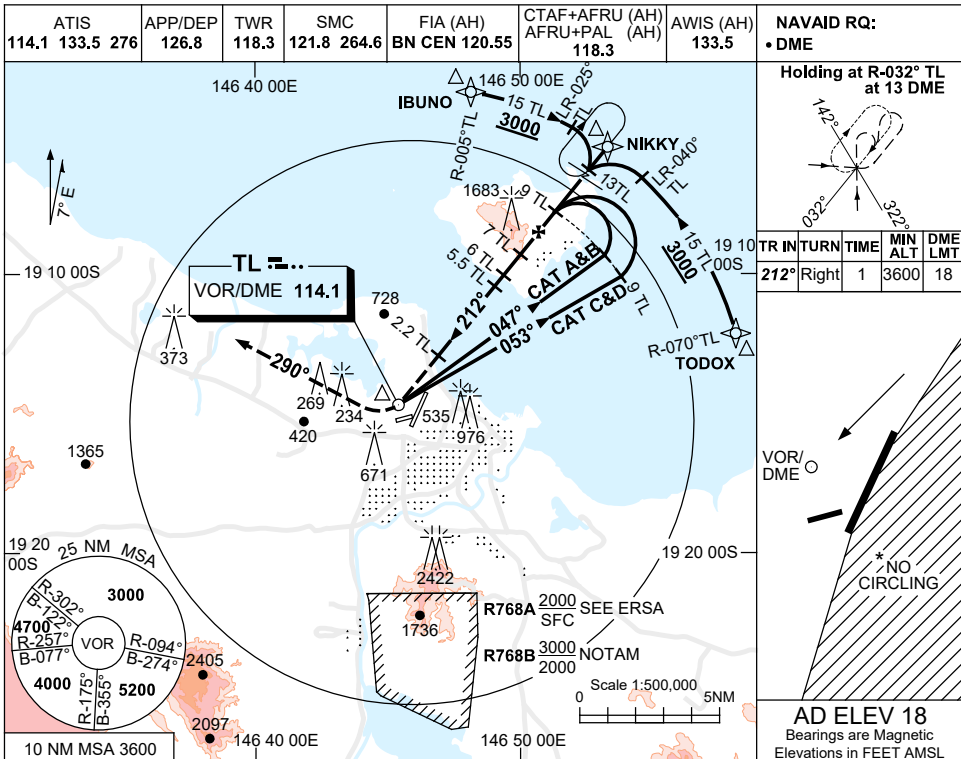


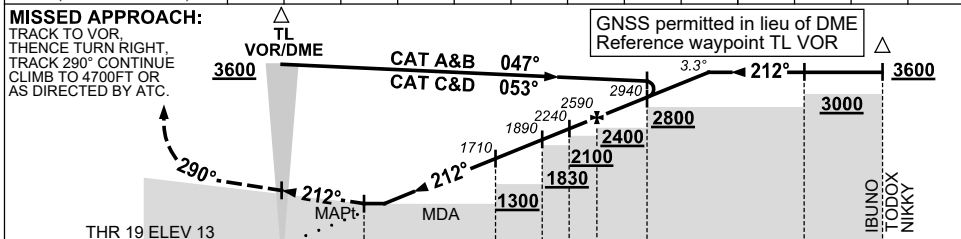
# USE QNH TOWNSVILLE/TOWNSVILLE INTL, QLD (YBTL)

VOR RWY 19

30 NOV 2023



NM TO TL DME	2.4	3	4	5	5.5	6	7	8	9	10	10.9	
ALT (3.3° APCH PATH)	620	830	1190	1540	1710	1890	2240	2590	2940	3290	3600	



NM TO TL DME	0	2.2	5.5	6	7	8	9	13	15
--------------	---	-----	-----	---	---	---	---	----	----

### NOTES

1. MAX IAS:  
INITIAL : 210KT.  
MAP TURN: 240KT.
- \* 2. NO CIRCLING IN SECTOR EAST OF RWY 01 & RWY 19.
- \* 3. SPECIAL ALTN MNM 900/4.5KM.
4. COLOUR: SEE SPEC NOTICES.

CATEGORY	A	B	C	D
S-I VOR/DME	620 (602-3.1)			
CIRCLING *	1090 (1072-2.4)		1350 (1332-4.0) 1350 (1332-5.0)	
ALTERNATE **	(1572-4.4)		(1832-6.0) (1832-7.0)	

Changes: IBUNO REPLACES NELLY, TODOX REPLACES WESTY, Editorial.

BTLV001-177