

**STANDARD INSTRUMENT ARRIVAL (STAR)  
VOMPA TWO BRAVO ARRIVAL (RNAV)  
TOWNSVILLE/TOWNSVILLE INTL, QLD (YBTL)**

**30 NOV 2023**

ATIS 114.1 133.5 276	ACD 128.1	SMC 121.8 264.6	TWR 118.3	APP/DEP 126.8	FIA (AH) BN CEN 120.55	CTAF+AFRU (AH) AFRU+PAL (AH) 118.3	AWIS (AH) 133.5	Bearings are Magnetic Elevations in FEET AMSL
-------------------------	--------------	--------------------	--------------	------------------	------------------------------	--	--------------------	--

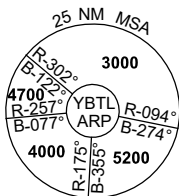
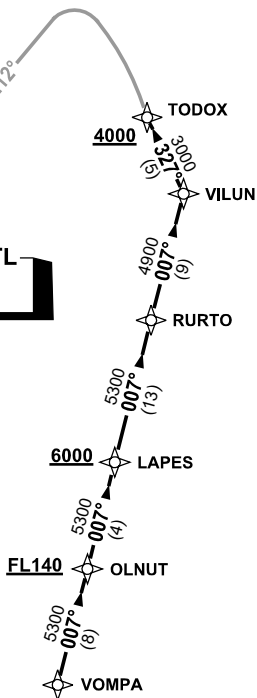
NOT TO SCALE



**SPEED  
MAX IAS 250KT  
BELOW 10,000ft**

**RNP 1**

**TOWNSVILLE/TOWNSVILLE INTL**  
TL VOR/DME 114.1



10 NM MSA 3600

**VOMPA TWO ARRIVAL**

**RWY 19 BRAVO:**

- From VOMPA track 007° to OLNUT  
**Cross** OLNUT AT or ABV FL140
- Track 007° to LAPES  
**Cross** LAPES AT or ABV 6000ft
- Track 007° to RURTO
- Track 007° to VILUL
- Turn **LEFT**, track 327° to TODOX  
**Cross** TODOX AT or ABV 4000ft
- From TODOX track via VOR RWY 19

**COMMUNICATIONS FAILURE: PROCEDURE IN IMC  
IF ABLE CTC TL APP 07-4752-1207**

- Squawk 7600, comply with vertical navigation requirements, but not below MSA.
- Track via the latest STAR clearance to the nominated runway, then fly the most suitable approach in accordance with ERSA EMERG Section 1.5.