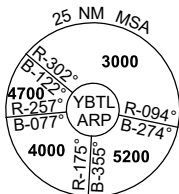
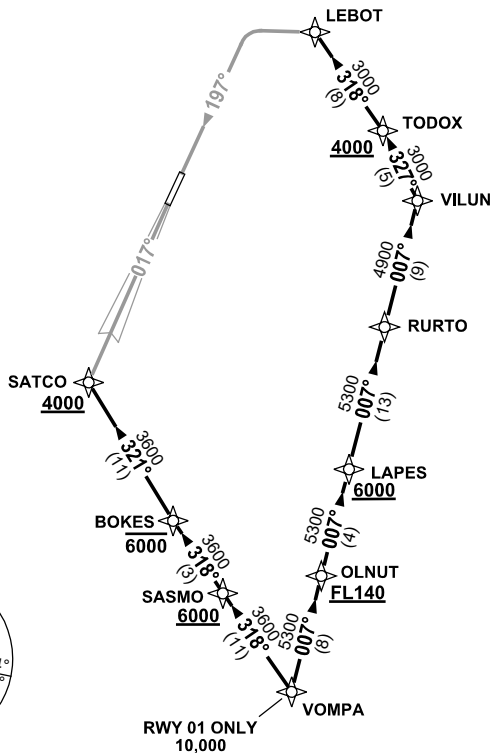


# STANDARD INSTRUMENT ARRIVAL (STAR) VOMPA TWO ALPHA, ZULU ARRIVALS (RNAV) TOWNSVILLE/TOWNSVILLE INTL, QLD (YBTL)

30 NOV 2023

ATIS 114.1 133.5 276	ACD 128.1	SMC 121.8 264.6	TWR 118.3	APP/DEP 126.8	FIA (AH) BN CEN 120.55	CTAF+AFRU (AH) AFRU+PAL (AH) 118.3	AWIS (AH) 133.5	Bearings are Magnetic Elevations in FEET AMSL
-------------------------	--------------	--------------------	--------------	------------------	------------------------------	--	--------------------	--

NOT TO SCALE



10 NM MSA 3600

## VOMPA TWO ARRIVAL

### RWY 01 ALPHA:

- **Cross** VOMPA AT or ABV 10,000ft
- From VOMPA track 318° to SASMO
- **Cross** SASMO AT or ABV 6000ft
- Track 318° to BOKES
- **Cross** BOKES AT or BLW 6000ft
- Track 321° to SATCO
- **Cross** SATCO AT or ABV 4000ft
- From SATCO track via RNP Z RWY 01 or ILS RWY 01

### RWY 19 ZULU:

- From VOMPA track 007° to OLNUT
- **Cross** OLNUT AT or ABV FL140
- Track 007° to LAPES
- **Cross** LAPES AT or ABV 6000ft
- Track 007° to RURTO
- Track 007° to VILUN
- Turn LEFT, track 327° to TODOX
- **Cross** TODOX AT or ABV 4000ft
- Turn LEFT, track 318° to LEBOT
- From LEBOT track via RNP Z RWY 19

## COMMUNICATIONS FAILURE: PROCEDURE IN IMC IF ABLE CTC TL APP 07-4752-1207

- Squawk 7600, comply with vertical navigation requirements, but not below MSA.
- Track via the latest STAR clearance to the nominated runway, then fly the most suitable approach in accordance with ERSA EMERG Section 1.5.

Changes: TODOX REPLACES WESTY, VALIDITY NUMBER, Editorial.

BTLSR06-177