

STANDARD INSTRUMENT ARRIVAL (STAR)  
IGIKI TWO ALPHA ARRIVAL (RNAV)

TOWNSVILLE/TOWNSVILLE INTL, QLD (YBTL)

30 NOV 2023

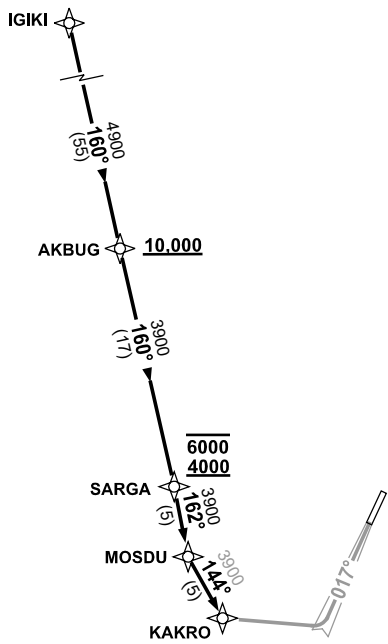
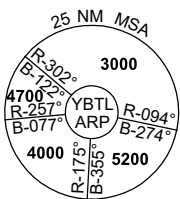
ATIS 114.1 133.5 276	ACD 128.1	SMC 121.8 264.6	TWR 118.3	APP/DEP 126.8	FIA (AH) BN CEN 120.55	CTAF+AFRU (AH) AFRU+PAL (AH) 118.3	AWIS (AH) 133.5	Bearings are Magnetic Elevations in FEET AMSL
-------------------------	--------------	--------------------	--------------	------------------	------------------------------	--	--------------------	--

NOT TO SCALE



**SPEED  
MAX IAS 250KT  
BELOW 10,000ft**

**RNP 1**



10 NM MSA 3600

**IGIKI TWO ARRIVAL**

**RWY 01 ALPHA:**

- From IGIKI track 160° to AKBUG  
**Cross** AKBUG AT or ABV 10,000ft
- Track 160° to SARGA  
**Cross** SARGA BETWEEN 4000-6000ft
- Turn RIGHT, track 162° to MOSDU
- Turn LEFT, track 144° to KAKRO
- From KAKRO track via RNP Z RWY 01 or ILS RWY 01

**COMMUNICATIONS FAILURE: PROCEDURE IN IMC  
IF ABLE CTC TL APP 07-4752-1207**

- Squawk 7600, comply with vertical navigation requirements, but not below MSA.
- Track via the latest STAR clearance to the nominated runway, then fly the most suitable approach in accordance with ERSA EMERG Section 1.5.

Changes: KAKRO REPLACES FREDY, VALIDITY EDITORIAL, Editorial.

BTLSR05-177