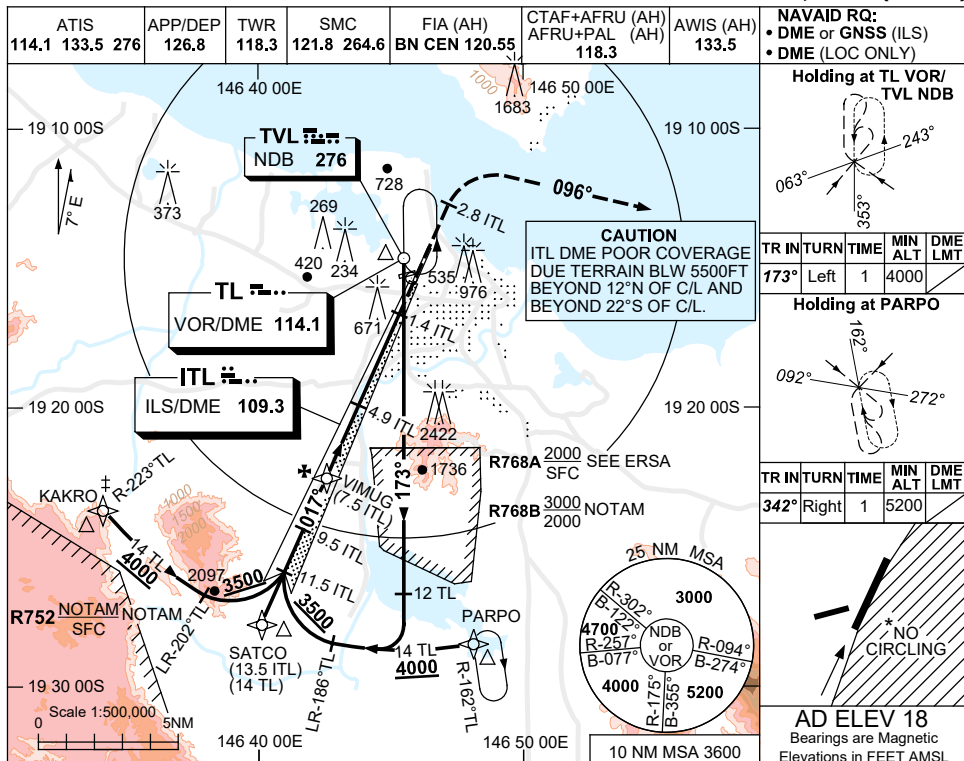


USE QNH

ILS-Z or LOC-Z RWY 01

30 NOV 2023

TOWNSVILLE/TOWNSVILLE INTL, QLD (YBTL)



**NAVAID RQ:**  
 • DME or GNSS (ILS)  
 • DME (LOC ONLY)

**Holding at TL VOR/ TVL NDB**

TR	IN	TURN	TIME	MIN ALT	DME LMT
173°	Left	1	4000		

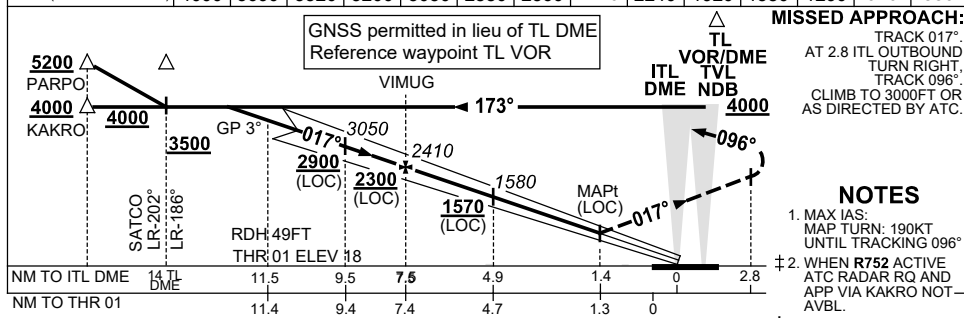
**Holding at PARPO**

TR	IN	TURN	TIME	MIN ALT	DME LMT
342°	Right	1	5200		

**AD ELEV 18**  
 Bearings are Magnetic  
 Elevations in FEET AMSL

**NO CIRCLING**

NM TO ITL DME	12.5	11.5	11	10	9.5	9	8	7.5	7	6	4.9	4	3	2.7
ALT (3° APCH PATH)	4000	3690	3520	3200	3050	2880	2560	2410	2240	1920	1580	1290	970	880



- NOTES**
- MAX IAS:  
MAP TURN: 190KT  
UNTIL TRACKING 096°
  - WHEN R752 ACTIVE  
ATC RADAR RQ AND  
APP VIA KAKRO NOT  
AVBL.
  - NO CIRCLING IN  
SECTOR EAST OF  
RWY 01 & RWY 19.
  - ACFT MAY BE RADAR  
VECTORED TO IAF.
  - SPECIAL ALTN MNM  
900 /4 SKM. (NOT  
APPLICABLE TO  
LOC/DME).
  - COLOUR: SEE  
SPEC NOTICES.

CATEGORY	A	B	C	D
S-I ILS		370 (352)	1.6 (VIS 1.2 WITH ACTUAL QNH)	
S-I LOC		880 (862-4.6)		
CIRCLING *	1090 (1072-2.4)		1350 (1332-4.0)	1350 (1332-5.0)
ALTERNATE *	(1572-4.4)		(1832-6.0)	(1832-7.0)

Changes: KAKRO REPLACES FREDY, PARPO REPLACES KIRAN, Editorial. BT1102-177