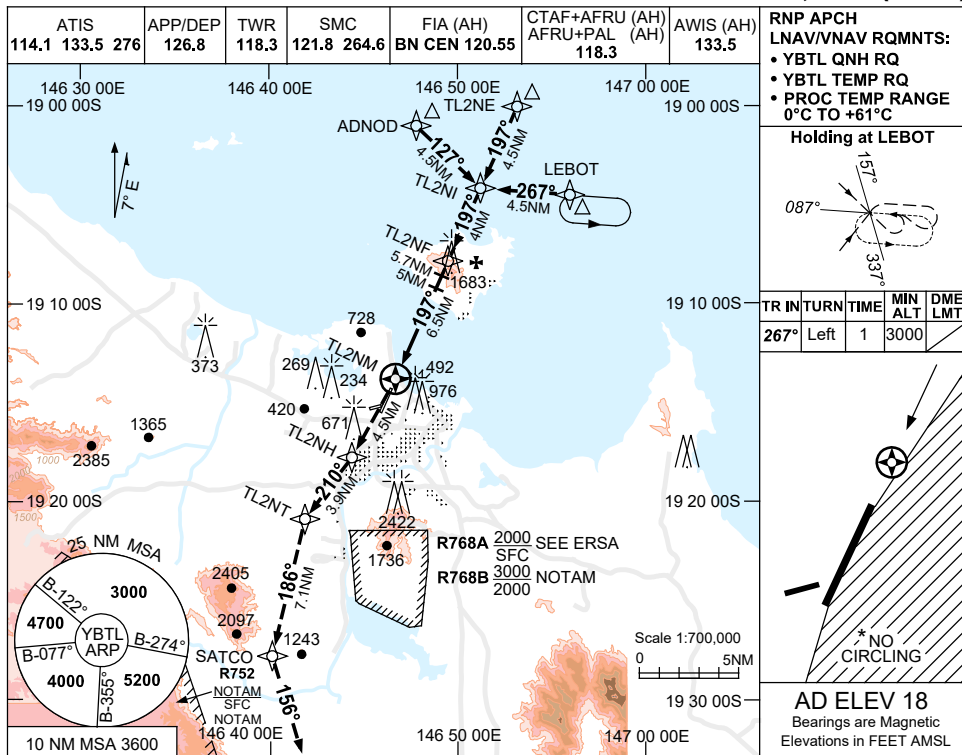


USE QNH

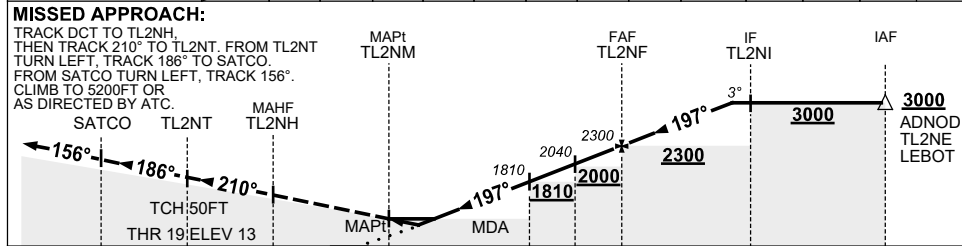
RNP Z RWY 19

30 NOV 2023

TOWNSVILLE/TOWNSVILLE INTL, QLD (YBTL)



NM TO NEXT WPT	TL2NM	1.1	1.2	1.4	2	3	4	5	5.7	TL2NF	1	2	2.2
ALT (3.0° APCH PATH)		560	590	660	860	1180	1500	1810	2040	2300	2610	2930	3000



- NOTES**
- MAX IAS: INITIAL : 210KT. MISSED APCH TL2NH: 210KT. SATCO: 240KT.
  - NO CIRCLING IN SECTOR EAST OF RWY 01 & RWY 19.
  - COLOR: SEE SPEC NOTICES.
  - HOLDING NOT CONTAINED IN CTA.
  - PAPI SLOPE DOES NOT COINCIDE WITH PROC SLOPE.

CATEGORY	A	B	C	D
LNAV/VNAV	550 (537-3.0)		590 (577-3.3)	660 (647-3.7)
LNAV	560 (542-3.1)			
CIRCLING*	1090 (1072-2.4)		1350 (1332-4.0)	1350 (1332-5.0)
ALTERNATE	(1572-4.4)		(1832-6.0)	(1832-7.0)

Changes: MISSED APCH, WPT NAMING CONVENTION, PROC TEMP RANGE, MINIMA, NEW LOGO.

BTLGN02-177