

FOR CASA APPROVED OPERATORS ONLY

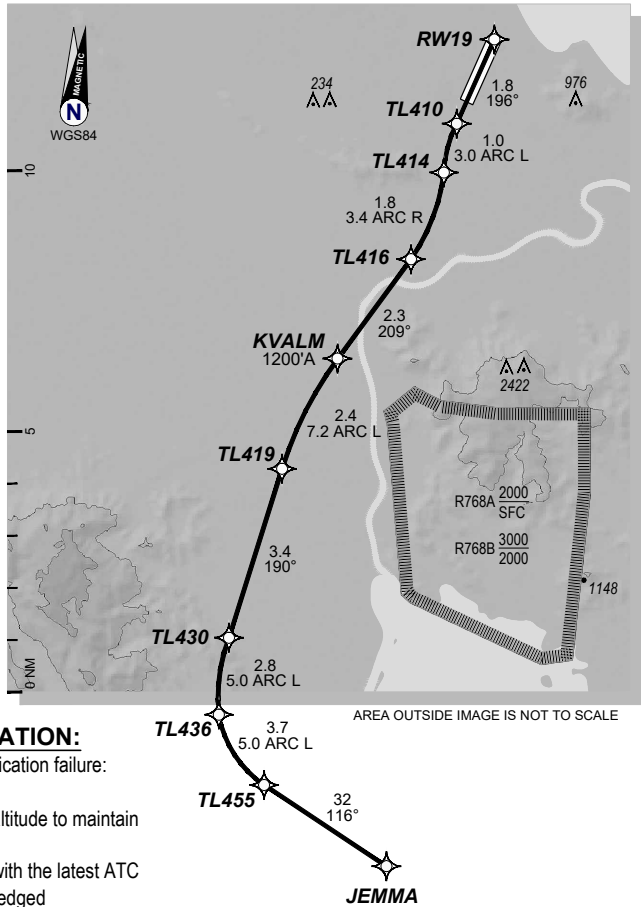
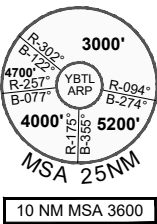
USE QNH

KVALM TWO DEPARTURE

30 NOV 2023

TOWNSVILLE/TOWNSVILLE INTL, QLD (YBTL)

Apt Elev <b>18'</b>		Trans ALT <b>10000'</b>							
ATIS <b>114.1 133.5 276</b>			DEP <b>126.8</b>	TWR <b>118.3</b>	SMC <b>121.8 264.6</b>		FIA (AH) <b>BN CEN 120.55</b>	CTAF+AFRU (AH) AFRU+PAL (AH) <b>118.3</b>	AWIS (AH) <b>133.5</b>
<b>KVALM TWO</b> <b>RNAV (RNP) DEPARTURE</b> <b>RNP 0.30</b> <b>(KVALM2.JEMMA)</b> <b>RWY 19</b>				Requires weather minima of 0' ceiling / 500 meters visibility. <b>TAKE-OFF:</b> <b>RWY 19:</b> Fly the RNAV (RNP) track to <b>JEMMA</b> . Cross <b>KVALM</b> at or above 1200'.					



AREA OUTSIDE IMAGE IS NOT TO SCALE

**LOST COMMUNICATION:**

- On recognition of communication failure:
- Squawk 7600
  - Climb to minimum safe altitude to maintain terrain clearance
  - Proceed in accordance with the latest ATC route clearance acknowledged

202307202142 COPYRIGHT 2023 GE DIGITAL. USA, PROPRIETARY AND CONFIDENTIAL

Changes: PROCEDURE UPNUMBERED, EDITORIAL

BTLDP16-177

**DO NOT USE FOR NAVIGATION**

Prepared by GE Aviation

