

**STANDARD INSTRUMENT DEPARTURES (SID)  
RWY 01/19 WALTA TWO (RNAV)  
TOWNSVILLE/TOWNSVILLE INTL, QLD (YBTL)**

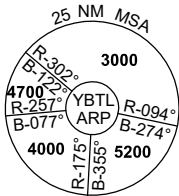
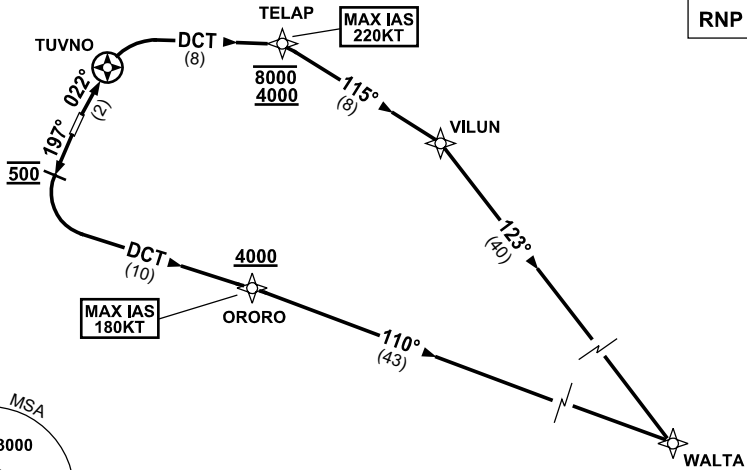
**30 NOV 2023**

ATIS 114.1 133.5 276	ACD 128.1	SMC 121.8 264.6	TWR 118.3	APP/DEP 126.8	FIA (AH) BN CEN 120.55	CTAF+AFRU (AH) AFRU+PAL (AH) 118.3	AWIS (AH) 133.5	Bearings are Magnetic Elevations in FEET AMSL
-------------------------	--------------	--------------------	--------------	------------------	------------------------------	--	--------------------	--

NOT TO SCALE

**SPEED  
MAX IAS 250KT  
BELOW 10,000ft**

**RNP 1**



10 NM MSA 3600

**WALTA TWO DEPARTURE  
RWY 01**

GRAD 4.9% to 1700ft then 3.3%  
**MAX IAS 220KT UNTIL PASSING TELAP**

- Track 022° to TUVNO
- Turn RIGHT, track DCT to TELAP  
**Cross** TELAP BETWEEN 4000-8000ft  
(RQ GRAD to TELAP: 6.7%)
- Turn RIGHT, track 115° to VILUN
- Turn RIGHT, track 123° to WALTA

**RWY 19**

GRAD 8% to 1500ft then 3.3%  
**MAX IAS 180KT UNTIL PASSING ORORO**

- Track 197°
- At 500ft turn LEFT, track DCT to ORORO  
**Cross** ORORO AT or ABV 4000ft  
(RQ GRAD to ORORO: 5.4% FM 1500ft)
- Track 110° to WALTA

Changes: TELAP REPLACES MAGGY, VALIDITY NUMBER, Editorial.

BTLDP12-177