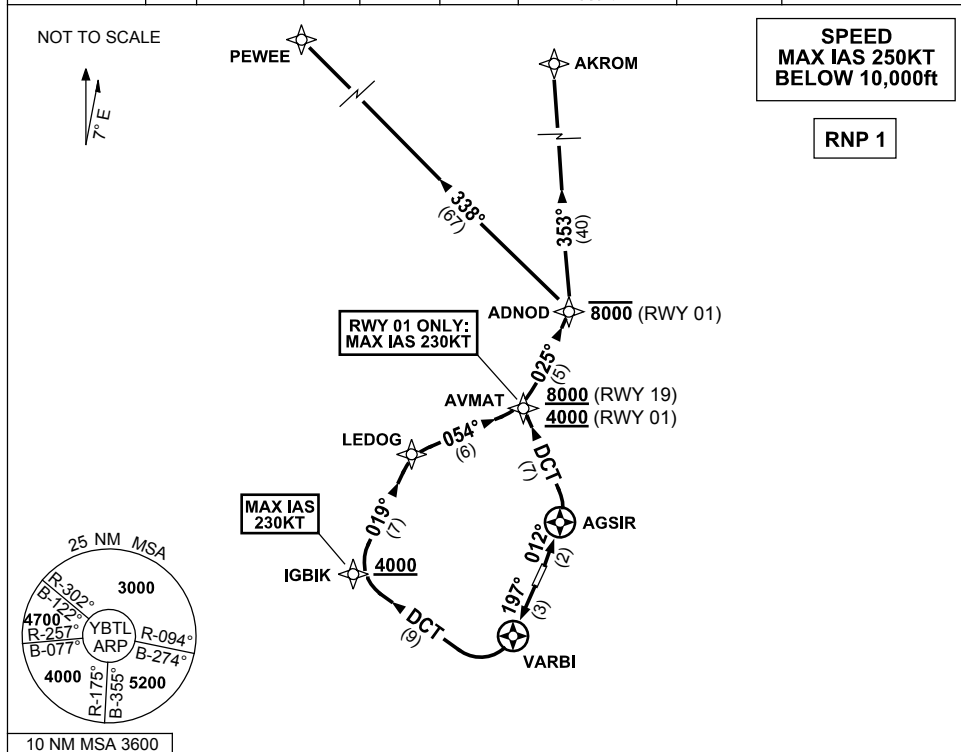


**STANDARD INSTRUMENT DEPARTURES (SID)  
RWY 01/19 ADNOD ONE (RNAV)  
TOWNSVILLE/TOWNSVILLE INTL, QLD (YBTL)**

13 JUN 2024

ATIS 114.1 133.5 276	ACD 128.1	SMC 121.8 264.6	TWR 118.3	APP/DEP 126.8	FIA (AH) BN CEN 120.55	CTAF+AFRU (AH) AFRU+PAL (AH) 118.3	AWIS (AH) 133.5	Bearings are Magnetic Elevations in FEET AMSL
-------------------------	--------------	--------------------	--------------	------------------	------------------------------	--	--------------------	--



**ADNOD ONE DEPARTURE**

**RWY 01**

- GRAD 5.4% to 1000ft then 3.3%  
**MAX IAS 230KT UNTIL PASSING AVMAT**
- Track 012° to AGSIR
  - Turn LEFT, track DCT to AVMAT  
**Cross** AVMAT AT or ABV 4000ft  
(RQ GRAD to AVMAT: 7.0%)
  - Turn RIGHT, track 025° to ADNOD  
**Cross** ADNOD AT or BLW 8000ft

**RWY 19**

- GRAD 5.5% to 1300ft then 3.3%  
**MAX IAS 230KT UNTIL PASSING IGBIK**
- Track 197° to VARBI
  - Turn RIGHT, track DCT to IGBIK  
**Cross** IGBIK AT or ABV 4000ft
  - Turn RIGHT, track 019° to LEDOG
  - Turn RIGHT, track 054° to AVMAT  
**Cross** AVMAT AT or ABV 8000ft  
(RQ GRAD to AVMAT: 5.6%)
  - Turn LEFT, track 025° to ADNOD

**TRANSITIONS:**

- AKROM** • From ADNOD turn LEFT, track 353° to AKROM
- PEWEE** • From ADNOD turn LEFT, track 338° to PEWEE

Changes: FROM SUP H98/23.

BTLDP11-179