

**STANDARD INSTRUMENT DEPARTURES (SID)
RWY 19 RURTO ONE (RNAV)
TOWNSVILLE/TOWNSVILLE INTL, QLD (YBTL)**

24 MAR 2022

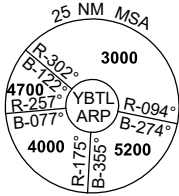
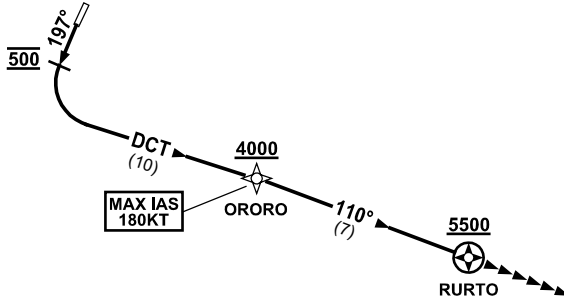
ATIS 114.1 133.5 276	ACD 128.1	SMC 121.8 264.6	TWR 118.3	APP/DEP 126.8	FIA (AH) BN CEN 120.55	CTAF+AFRU (AH) AFRU+PAL (AH) 118.3	AWIS (AH) 133.5	Bearings are Magnetic Elevations in FEET AMSL
-------------------------	--------------	--------------------	--------------	------------------	------------------------------	------------------------------------------	--------------------	--------------------------------------------------

NOT TO SCALE



**SPEED
MAX IAS 250KT
BELOW 10,000ft**

RNP 1



10 NM MSA 3600

RURTO ONE DEPARTURE

RWY 19

GRAD 8.0% to 1500ft then 3.3%
MAX IAS 180KT UNTIL PASSING ORORO

- Track 197°
- AT 500FT turn LEFT, track DCT to ORORO
Cross ORORO AT or ABV 4000ft
(RQ GRAD to ORORO: 5.4% FM 1500ft)
- Track 110° to RURTO
Cross RURTO AT or ABV 5500ft
(RQ GRAD to RURTO: 3.8% FM ORORO)
- Expect radar vectors to cleared route

COMMUNICATIONS FAILURE PROCEDURE

On recognition of communication failure

- Squawk 7600
- Maintain last assigned vector for two minutes, and
- CLIMB IF NECESSARY TO MINIMUM SAFE ALTITUDE, to maintain terrain clearance, then
- Proceed in accordance with the latest ATC route clearance acknowledged.