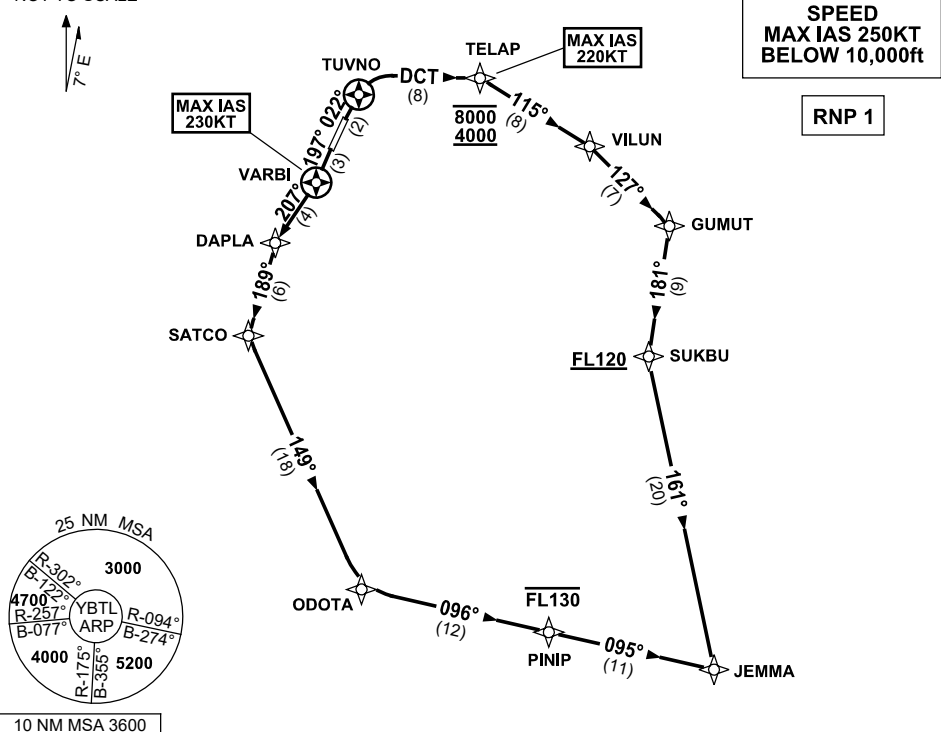


**STANDARD INSTRUMENT DEPARTURES (SID)  
RWY 01/19 JEMMA THREE (RNAV)  
TOWNSVILLE/TOWNSVILLE INTL, QLD (YBTL)**

**30 NOV 2023**

ATIS 114.1 133.5 276	ACD 128.1	SMC 121.8 264.6	TWR 118.3	APP/DEP 126.8	FIA (AH) BN CEN 120.55	CTAF+AFRU (AH) AFRU+PAL (AH) 118.3	AWIS (AH) 133.5	Bearings are Magnetic Elevations in FEET AMSL
-------------------------	--------------	--------------------	--------------	------------------	------------------------------	--	--------------------	--

NOT TO SCALE



10 NM MSA 3600

**JEMMA THREE DEPARTURE  
RWY 01**

- GRAD 4.9% to 1700ft then 3.3%
- MAX IAS 220KT UNTIL PASSING TELAP**
- Track 022° to TUVNO
- Turn RIGHT, track DCT to TELAP
- Cross TELAP BETWEEN 4000-8000ft**  
(RQ GRAD to TELAP: 6.7%)
- Turn RIGHT, track 115° to VILUN
- Turn RIGHT, track 127° to GUMUT
- Turn RIGHT, track 181° to SUKBU
- Cross SUKBU AT or ABV FL120**  
(RQ GRAD to SUKBU: 5.6% FM TELAP)
- Turn LEFT, track 161° to JEMMA

**RWY 19**

- GRAD 5.5% to 1200ft then 3.3%
- MAX IAS 230KT UNTIL PASSING VARBI**
- Track 197° to VARBI
- Turn RIGHT, track 207° to DAPLA
- Turn LEFT, track 189° to SATCO
- Turn LEFT, track 149° to ODOTA
- Turn LEFT, track 096° to PINIP
- Cross PINIP AT or BLW FL130**
- Track 095° to JEMMA

Changes: TELAP REPLACES MAGGY, VALIDITY NUMBER, Editorial.

BTLDP09-177