

STANDARD INSTRUMENT DEPARTURES (SID)

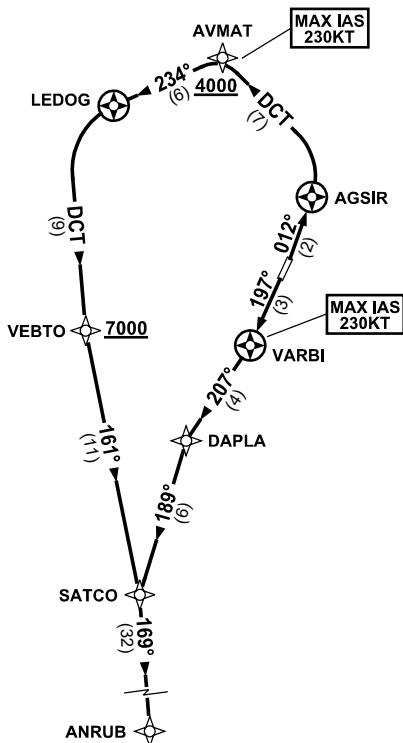
RWY 01/19 ANRUB ONE (RNAV)

TOWNSVILLE/TOWNSVILLE INTL, QLD (YBTL)

24 MAR 2022

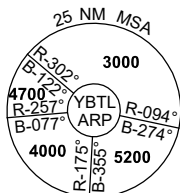
|                         |              |                    |              |                  |                              |  |                    |  |
|-------------------------|--------------|--------------------|--------------|------------------|------------------------------|--|--------------------|--|
| ATIS<br>114.1 133.5 276 | ACD<br>128.1 | SMC<br>121.8 264.6 | TWR<br>118.3 | APP/DEP<br>126.8 | FIA (AH)<br>BN CEN<br>120.55 | CTAF+AFRU (AH)<br>AFRU+PAL (AH)<br>118.3 | AWIS (AH)<br>133.5 | Bearings are Magnetic<br>Elevations in FEET AMSL |
|-------------------------|--------------|--------------------|--------------|------------------|------------------------------|--|--------------------|--|

NOT TO SCALE



**SPEED**  
MAX IAS 250KT  
BELOW 10,000ft

RNP 1



10 NM MSA 3600

**ANRUB ONE DEPARTURE**

**RWY 01**

GRAD 5.4% to 1000ft then 3.3%  
**MAX IAS 230KT UNTIL PASSING AVMAT**

- Track 012° to AGSIR
- Turn LEFT, track DCT to AVMAT  
**Cross** AVMAT AT or ABV 4000ft  
(RQ GRAD to AVMAT: 7.0%)
- Turn LEFT, track 234° to LEDOG
- Turn LEFT, track DCT to VEBTO  
**Cross** VEBTO AT or ABV 7000ft
- Track 161° to SATCO
- Turn RIGHT, track 169° to ANRUB

**RWY 19**

GRAD 5.5% to 1200ft then 3.3%  
**MAX IAS 230KT UNTIL PASSING VARBI**

- Track 197° to VARBI
- Turn RIGHT, track 207° to DAPLA
- Turn LEFT, track 189° to SATCO
- Turn LEFT, track 169° to ANRUB