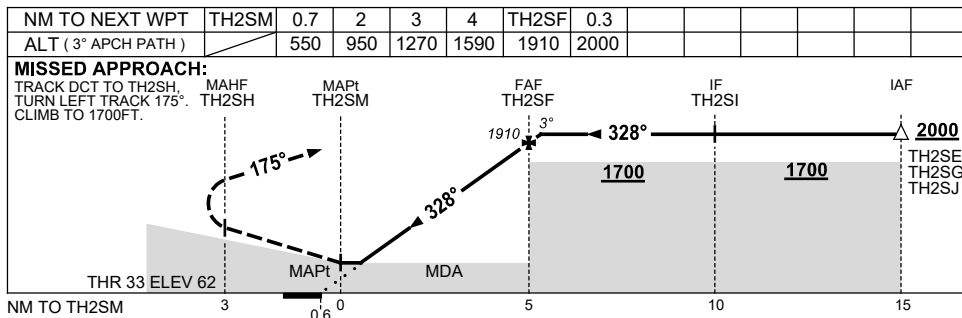
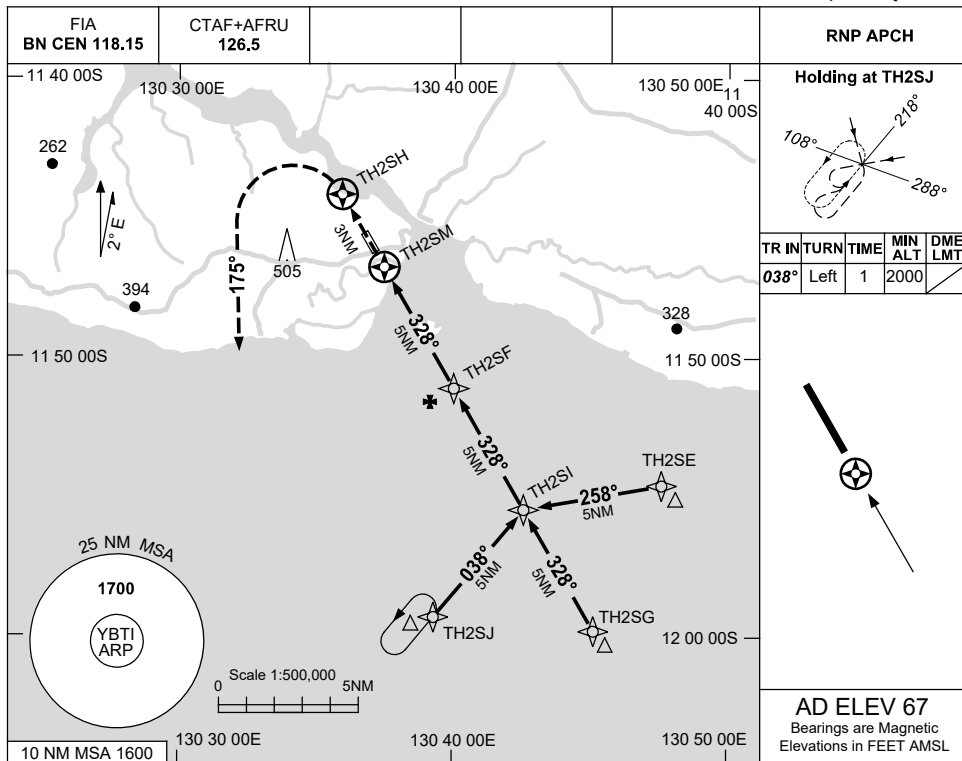


USE QNH

RNP RWY 33

8 SEP 2022

BATHURST ISLAND, NT (YBTI)



NOTES

CATEGORY	A	B	C	D
LNAV	550 (483-2.7)			NOT APPLICABLE
CIRCLING	800 (733-2.4)		1000 (933-4.0)	
ALTERNATE	(1233-4.4)		(1433-6.0)	

1. MAX IAS:
INITIAL : 210KT.

Changes: CHART TITLE, PBN SPECIFICATION BOX.

BTIGN02-172