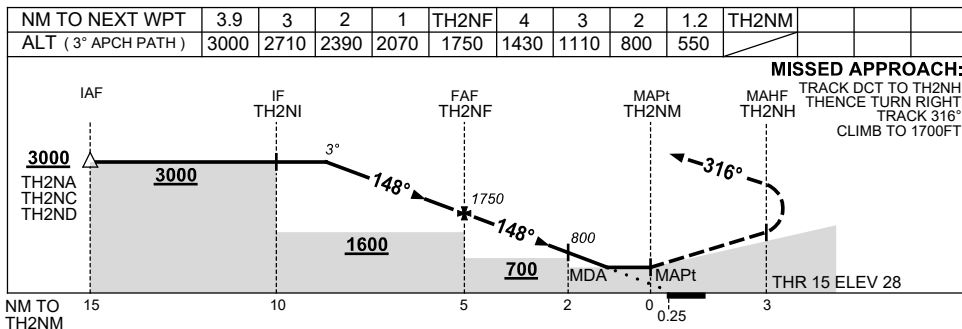
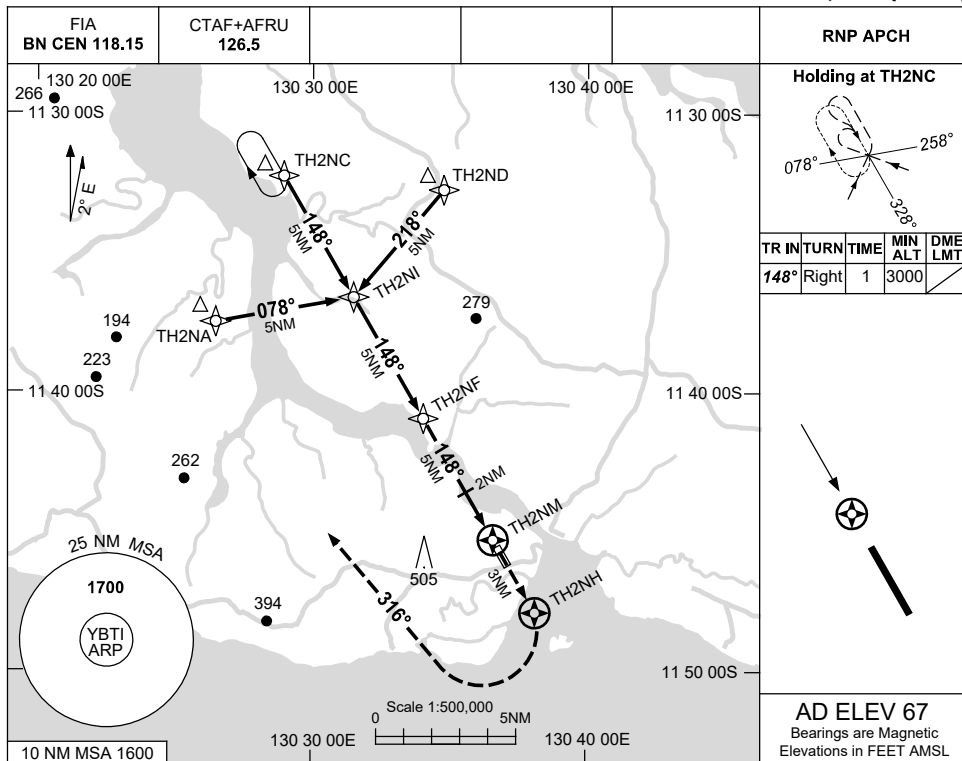


USE QNH

RNP RWY 15

8 SEP 2022

BATHURST ISLAND, NT (YBTI)



NOTES

CATEGORY	A	B	C	D
LNAV	550 (522-3.0)			NOT APPLICABLE
CIRCLING	800 (733-2.4)		1000 (933-4.0)	
ALTERNATE	(1233-4.4)		(1433-6.0)	

- MAX IAS:  
INITIAL : 210KT.
- HOLDING AT TH2NC  
OVERLAYS YGPT  
RNP RWY 04.

Changes: CHART TITLE, PBN SPECIFICATION BOX, NOTE 2.

BTIGN01-172