

**STANDARD INSTRUMENT ARRIVAL (STAR)
REBEG TWO X-RAY ARRIVAL (RNAV)
SUNSHINE COAST, QLD (YBSU)**

16 JUN 2022

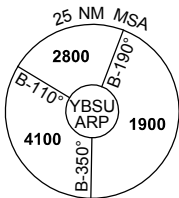
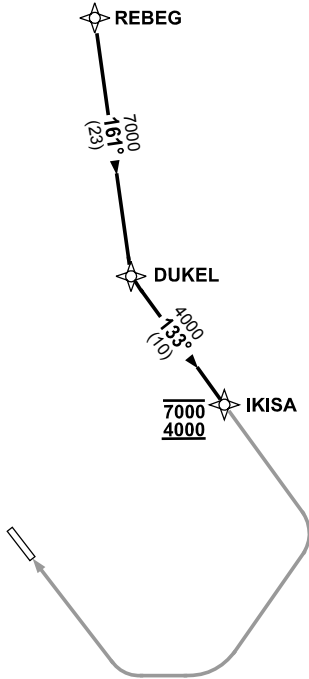
ATIS/AWIS (AH) 114.2/119.8	SMC 121.1	TWR 124.4	FIA BN CEN 129.0 (CCT AREA) BN CEN 135.2 (ON GROUND AH)	CTAF+AFRU (AH) 124.4	AFRU+PAL 124.4	Bearings are Magnetic Elevations in FEET AMSL
--------------------------------------	---------------------	---------------------	-----------------------------------------------------------------------	--------------------------------	--------------------------	--------------------------------------------------

NOT TO SCALE



**CLASS D SPEED
LIMITS APPLY**

RNP 1



10 NM MSA 2700

ARRIVAL: REBEG TWO X-RAY

RWY 31:

- From REBEG track 161° to DUKEL
- Turn LEFT, track 133° to IKISA
- **Cross IKISA BTN 4000FT and 7000FT**
- Track via RNP X RWY 31 (AR)

COMMUNICATIONS FAILURE: PROCEDURE IN IMC

- Squawk 7600, comply with vertical navigation requirements, but not below MSA.
- Track via the latest STAR clearance to the nominated runway, then fly the most suitable approach in accordance with ERSA EMERG Section 1.5.

Changes: PROC NUMBER.

BSUSR02-171