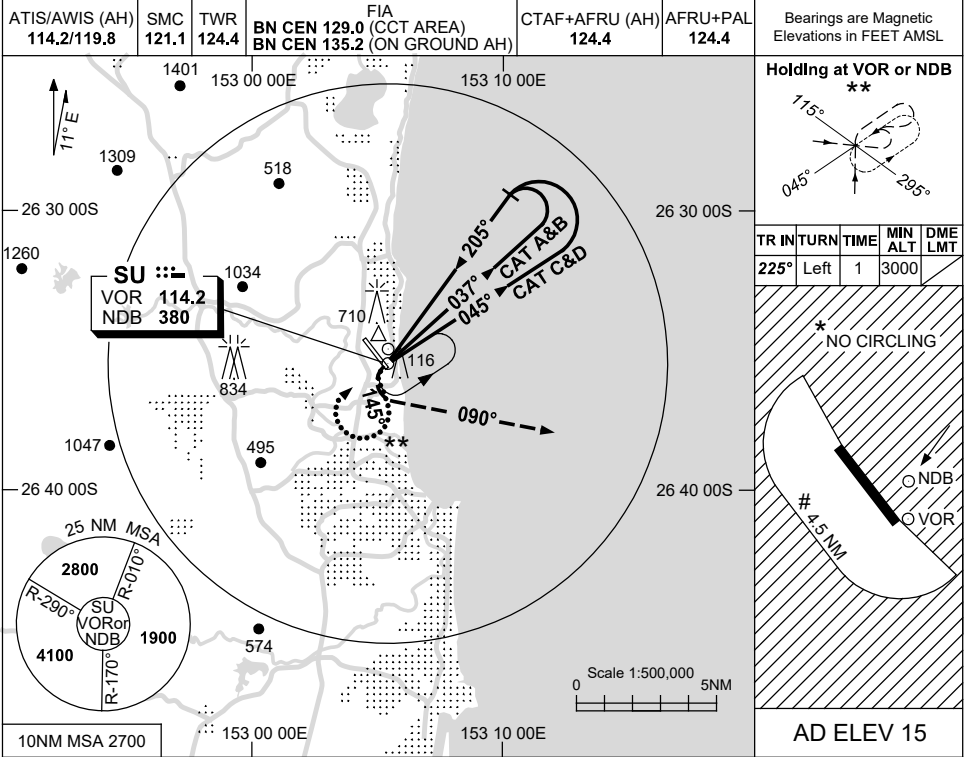


USE QNH

NDB-B or VOR-B

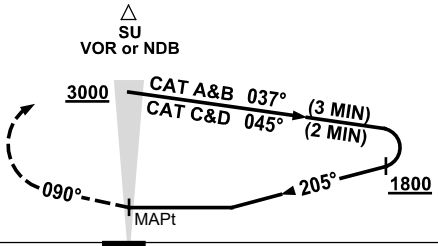
**SUNSHINE COAST, QLD (YBSU)**

21 MAR 2024



DME DIST							NOT APPLICABLE				
ALT											

**MISSED APPROACH:**  
AT NDB OR VOR TURN LEFT,  
TRACK 090°  
CLIMB TO 3000ft.



**NOTES**

1. MAX IAS:  
HOLDING: 180KT.  
INITIAL :  
CAT C&D 180KT.  
# CIRCLING 190KT.
2. PROC PARTIALLY OCTA DURING SU TWR HRS.
- \*3. NO CIRCLING E OF RWY 13/31 AND W BEYOND 4.5NM.
4. PROC TURN(80°/260°)  
\*\* RQ TO JOIN PROC FROM HOLD

CATEGORY	A	B	C	D
CIRCLING *	<b>870</b> (855-2.4)	<b>1160</b> (1145-4.0)	<b>1260</b> (1245-5.0)	
ALTERNATE	(1355-4.4)	(1645-6.0)	(1745-7.0)	

Changes: PJE SYMBOLS REMOVED, Editorial.

BSUN03-178