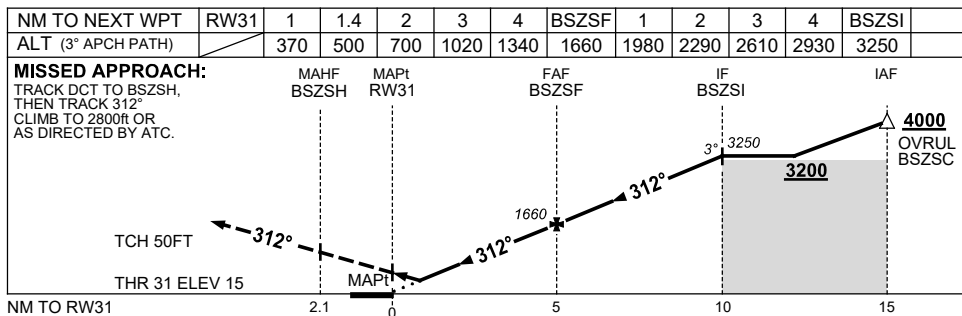
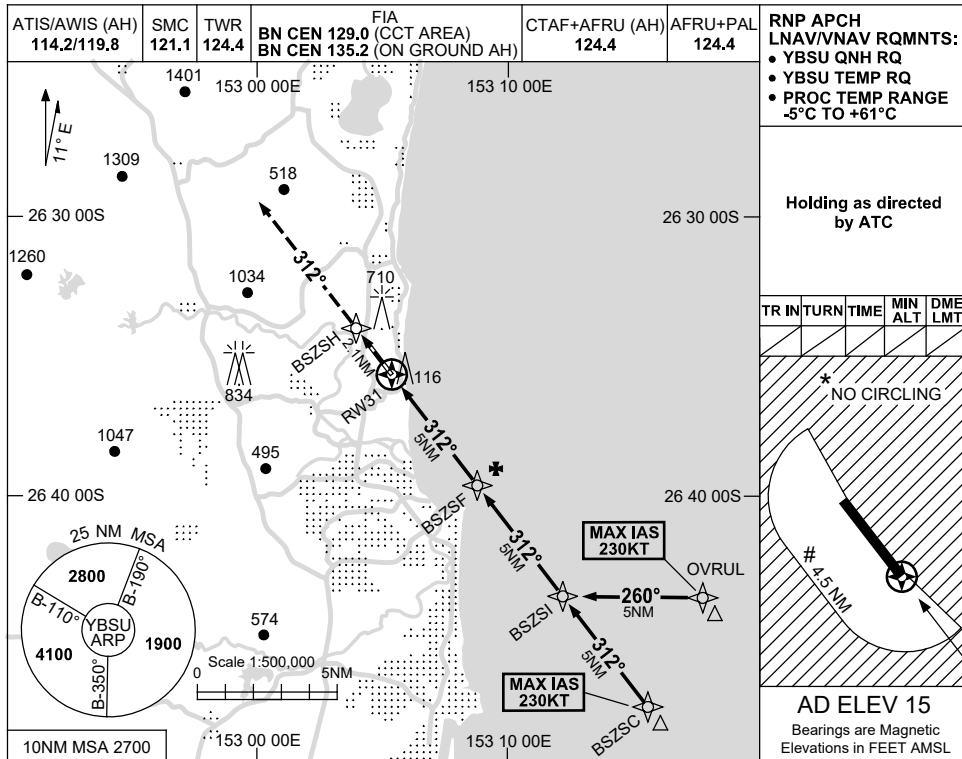


**USE QNH RNP Y RWY 31 (LNAV/VNAV ONLY)
SUNSHINE COAST, QLD (YBSU)**

21 MAR 2024



NOTES

CATEGORY	A	B	C	D
LNAV/VNAV (4.2% MAP)	370 (355-2.0)			
LNAV/VNAV (2.5% MAP)	500 (485-2.7)			
CIRCLING *	680 (665-2.4)	1160 (1145-4.0)	1260 (1245-5.0)	
ALTERNATE	(1165-4.4)		(1645-6.0)	(1745-7.0)

* 1. MAX IAS: INITIAL : 230KT. # CIRCLING: 190KT.
* 2. NO CIRCLING E OF RWY 13/31 AND W BEYOND 4.5NM.

Changes: PJE SYMBOLS REMOVED, Editorial.

BSUGN10-178