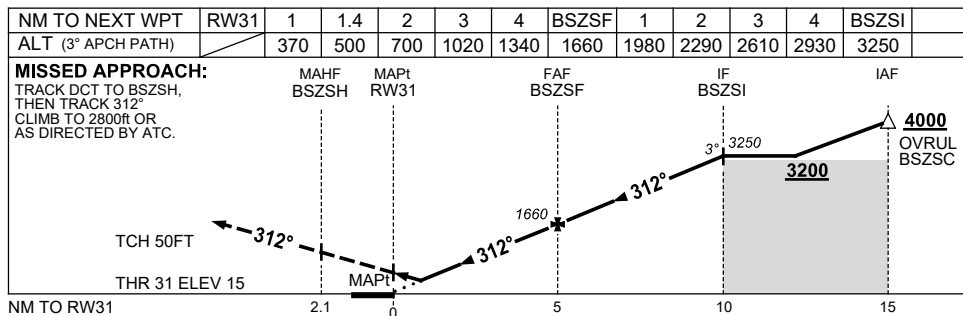
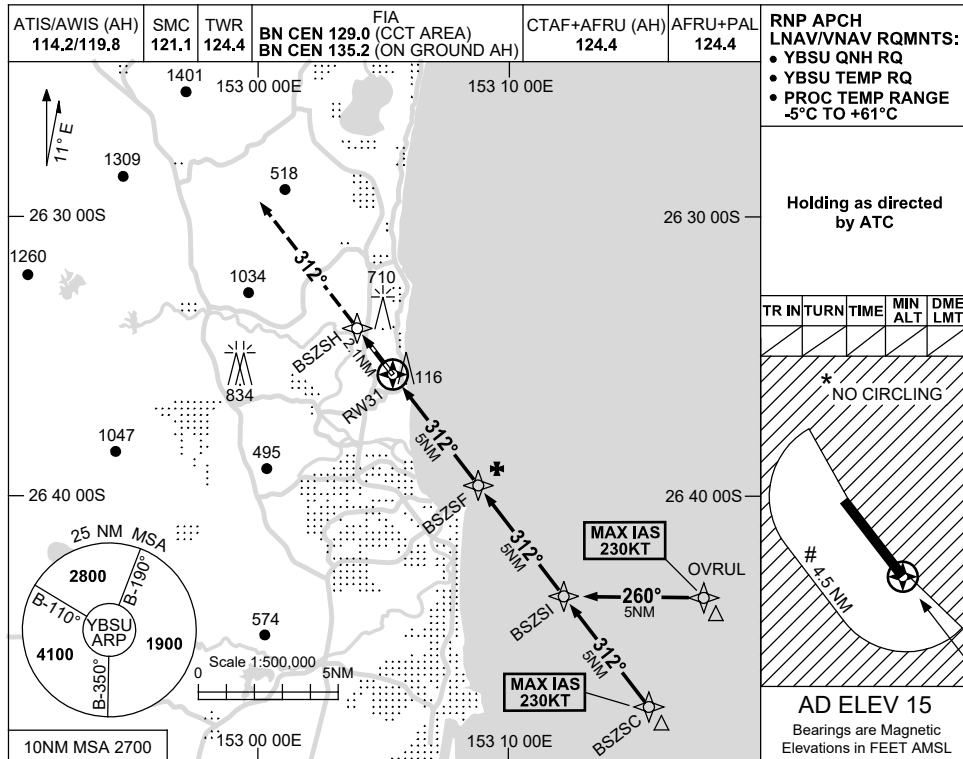


**USE QNH RNP Y RWY 31 (LNAV/VNAV ONLY)  
SUNSHINE COAST, QLD (YBSU)**

**21 MAR 2024**



**NOTES**

CATEGORY	A	B	C	D
LNAV/VNAV (4.2% MAP)	<b>370 (355-2.0)</b>			
LNAV/VNAV (2.5% MAP)	<b>500 (485-2.7)</b>			
CIRCLING *	<b>680 (665-2.4)</b>	<b>1160 (1145-4.0)</b>	<b>1260 (1245-5.0)</b>	
ALTERNATE	<b>(1165-4.4)</b>		<b>(1745-7.0)</b>	

1. MAX IAS: INITIAL : 230KT.  
# CIRCLING: 190KT.

\* 2. NO CIRCLING E OF RWY 13/31 AND W BEYOND 4.5NM.

Changes: PJE SYMBOLS REMOVED, Editorial.

BSUGN10-178