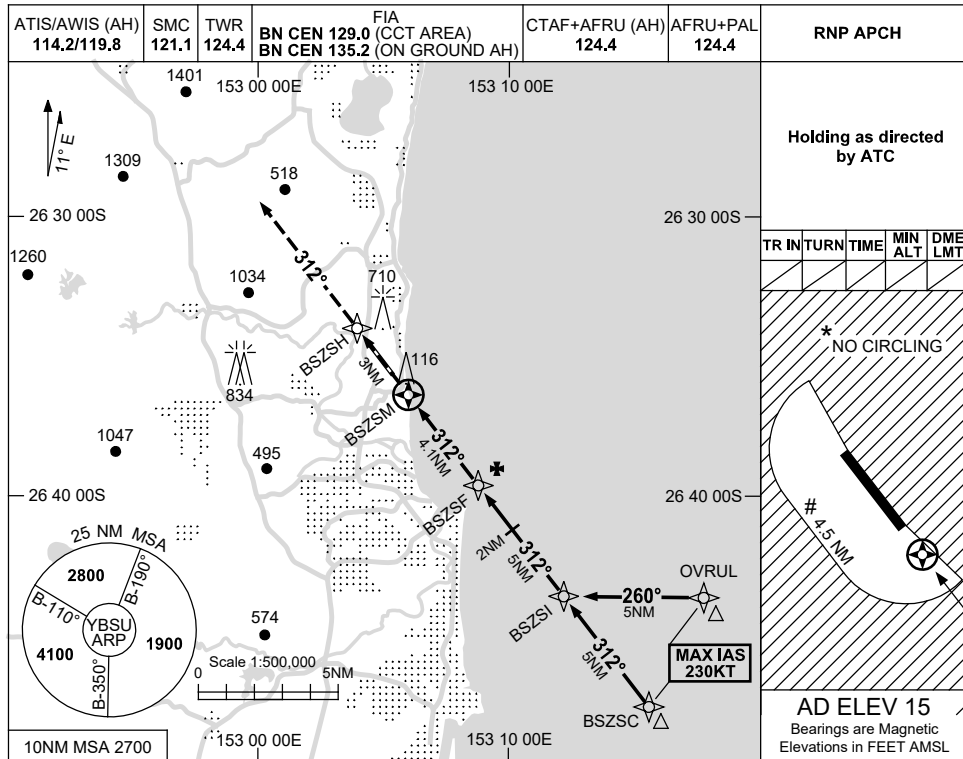


USE QNH

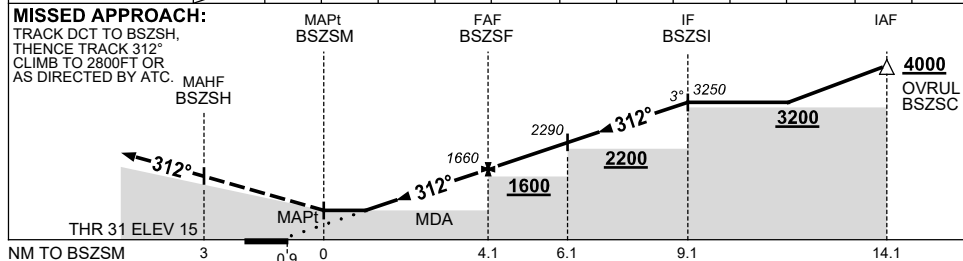
RNP Z RWY 31

21 MAR 2024

SUNSHINE COAST, QLD (YBSU)



NM TO NEXT WPT	BSZSM	0.6	0.9	2	3	BSZSF	1	2	3	4	BSZSI		
ALT (3° APCH PATH)		550	640	990	1310	1660	1980	2290	2610	2930	3250		



NOTES

CATEGORY	A	B	C	D
LNAV (3.5% MAP)		550 (535-3.0)		
LNAV (2.5% MAP)		640 (625-3.6)		
CIRCLING *	680 (665-2.4)		1160 (1145-4.0)	1260 (1245-5.0)
ALTERNATE	(1165-4.4)		(1645-6.0)	(1745-7.0)

- MAX IAS: INITIAL : 230KT. # CIRCLING: 190KT.
- * NO CIRCLING E OF RWY 13/31 AND W BEYOND 4.5NM.

Changes: PJE SYMBOLS REMOVED, Editorial.

BSUGN09-178