

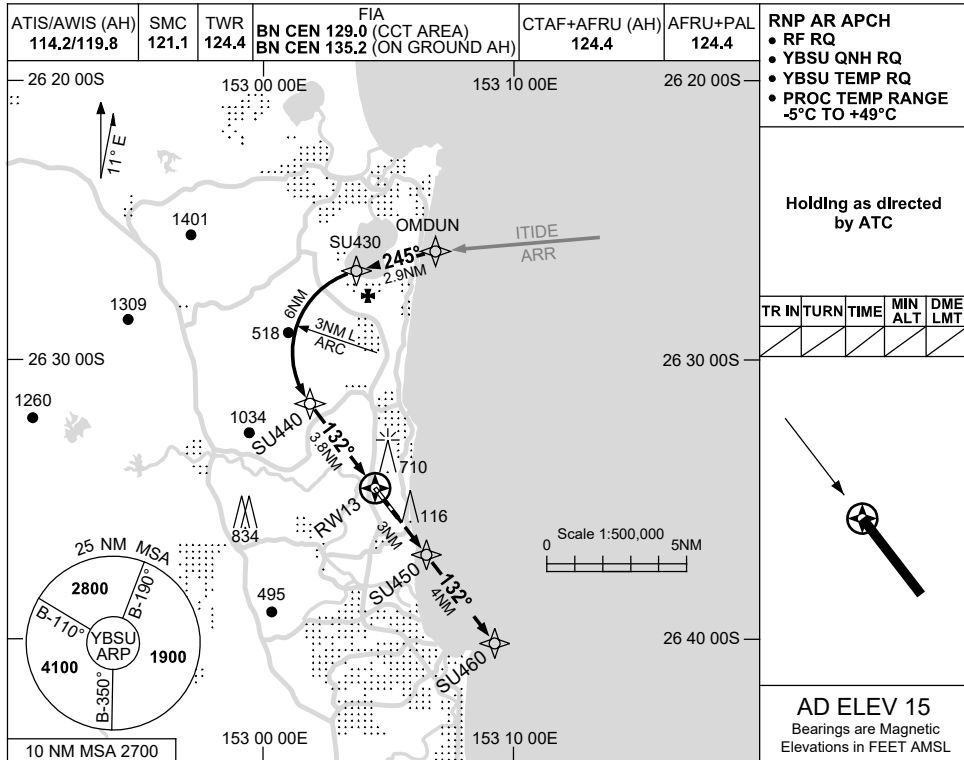
FOR CASA APPROVED OPERATORS ONLY

USE QNH

RNP W RWY 13 (AR)

SUNSHINE COAST, QLD (YBSU)

21 MAR 2024



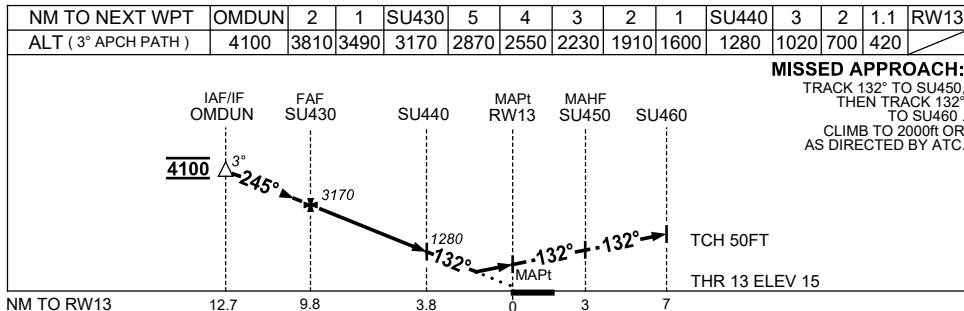
RNP AR APCH

- RF RQ
- YBSU QNH RQ
- YBSU TEMP RQ
- PROC TEMP RANGE -5°C TO +49°C

Holding as directed by ATC

TR	IN	TURN	TIME	MIN ALT	DME LMT

AD ELEV 15  
Bearings are Magnetic  
Elevations in FEET AMSL



NOTES

CATEGORY	A	B	C	D
RNP (0.3)	420 (405-2.3)			
CIRCLING	NOT AUTHORISED			
ALTERNATE	(1065-4.4)	(1545-6.0)	(1645-7.0)	

Changes: PJE SYMBOLS REMOVED, Editorial.

BSUGN07-178