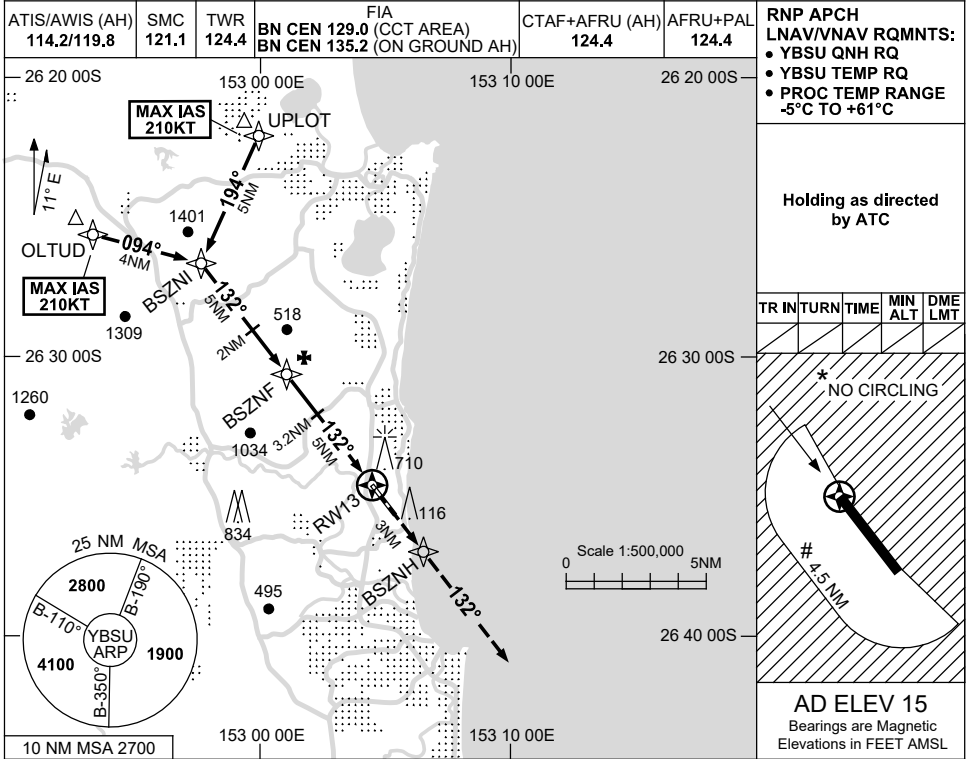


USE QNH

RNP Z RWY 13

SUNSHINE COAST, QLD (YBSU)

21 MAR 2024



RNP APCH
LNAV/VNAV RQMNTS:
 • YBSU QNH RQ
 • YBSU TEMP RQ
 • PROC TEMP RANGE
 -5°C TO +61°C

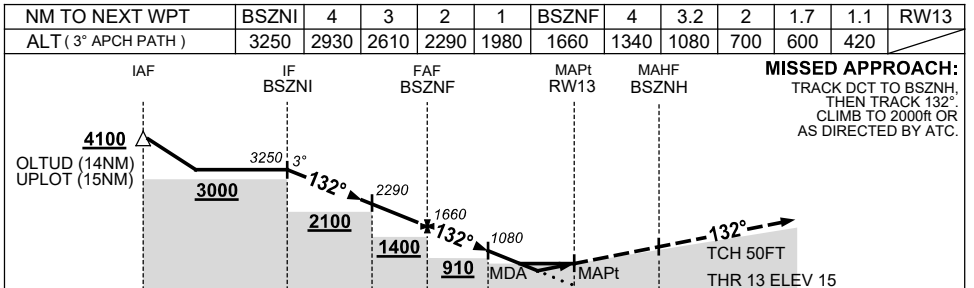
Holding as directed by ATC

TR	IN	TURN	TIME	MIN ALT	DME LMT

* NO CIRCLING

4.5 NM

AD ELEV 15
 Bearings are Magnetic
 Elevations in FEET AMSL



CATEGORY	A	B	C	D
LNAV/VNAV		420 (405-2.3)		
LNAV		600 (585-3.3)		
CIRCLING*	680 (665-2.4)		1160 (1145-4.0)	1260 (1245-5.0)
ALTERNATE	(1165-4.4)		(1645-6.0)	(1745-7.0)

NOTES

- MAX IAS:
 INITIAL : 210KT,
 # CIRCLING: 190KT.
- * NO CIRCLING E OF RWY 13/31 AND W BEYOND 4.5NM.

Changes: PJE SYMBOLS REMOVED, Editorial.

BSUGN05-178