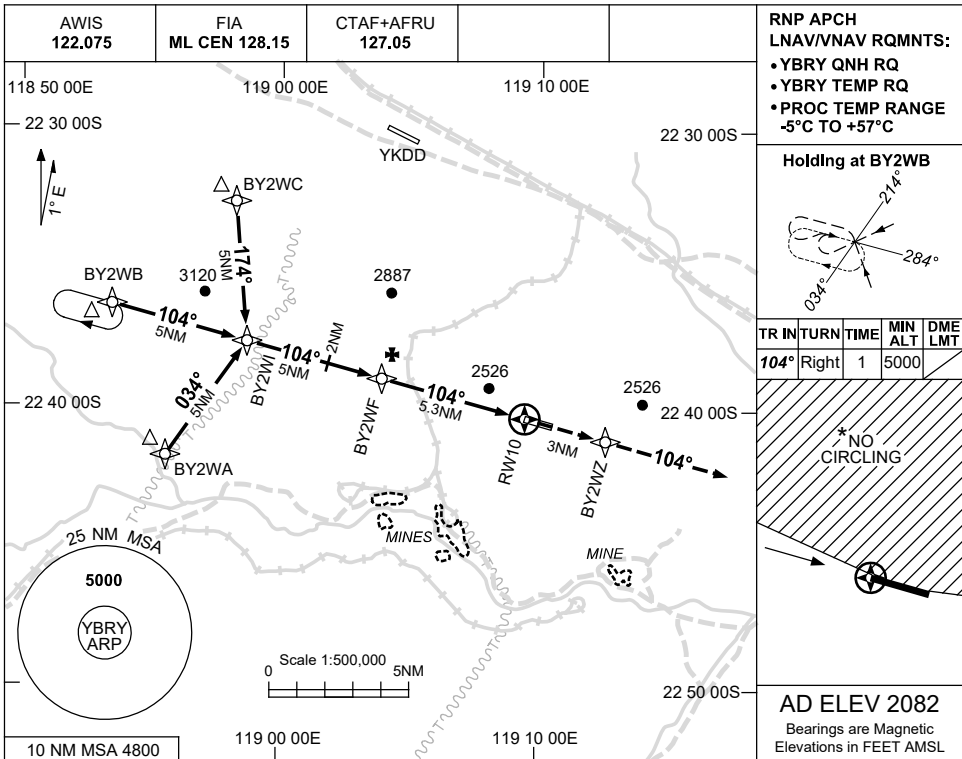


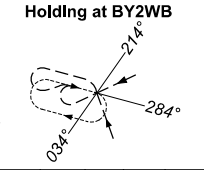
USE QNH

RNP RWY 10
BARIMUNYA, WA (YBRY)

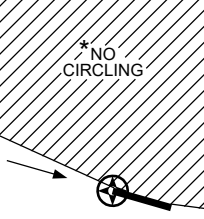
21 MAR 2024



RNP APCH
 LNAV/VNAV RQMNTS:
 • YBRY QNH RQ
 • YBRY TEMP RQ
 • PROC TEMP RANGE
 -5°C TO +57°C

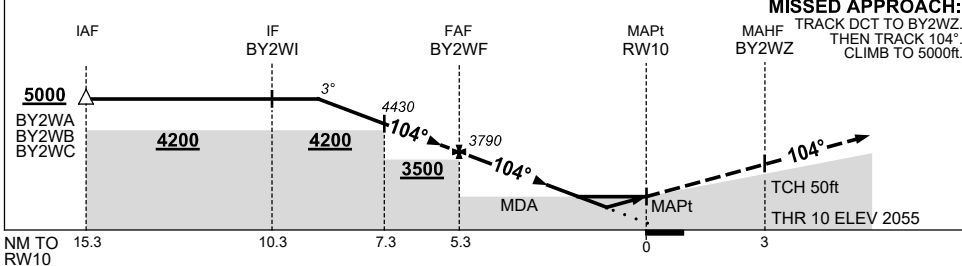


| TR | IN | TURN | TIME | MIN ALT | DME LMT |
|------|-------|------|------|---------|---------|
| 104° | Right | | 1 | 5000 | |



AD ELEV 2082
 Bearings are Magnetic
 Elevations in FEET AMSL

| NM TO NEXT WPT | 3.8 | 3 | 2 | 1 | BY2WF | 5 | 4 | 3 | 2.5 | 2 | RW10 |
|--------------------|------|------|------|------|-------|------|------|------|------|------|------|
| ALT (3° APCH PATH) | 5000 | 4750 | 4430 | 4110 | 3790 | 3700 | 3380 | 3060 | 2890 | 2750 | |



MISSED APPROACH:
 TRACK DCT TO BY2WZ.
 THEN TRACK 104°. CLIMB TO 5000ft.

NOTES

1. MAX IAS: INITIAL : 210KT.
- * 2. NO CIRCLING N OF RWY 10/28.

| CATEGORY | A | B | C | D |
|------------|----------------|---|-----------------|----------------|
| LNAV/VNAV | 2750 (695-4.0) | | | NOT APPLICABLE |
| LNAV | 2890 (835-4.8) | | | |
| CIRCLING * | 3080 (998-2.4) | | 3240 (1158-4.0) | |
| ALTERNATE | (1498-4.4) | | (1658-6.0) | |

Changes: STEP DOWN FIX AND PROC ALT, WPT NAMING. POWERLINE ADDED, Editorial. BRYGN03-178