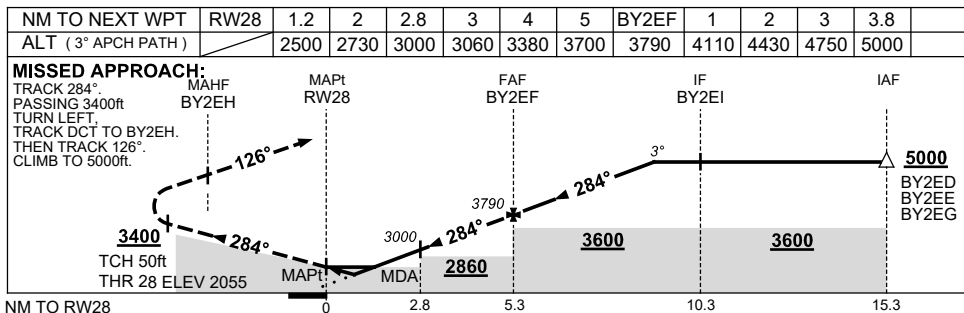
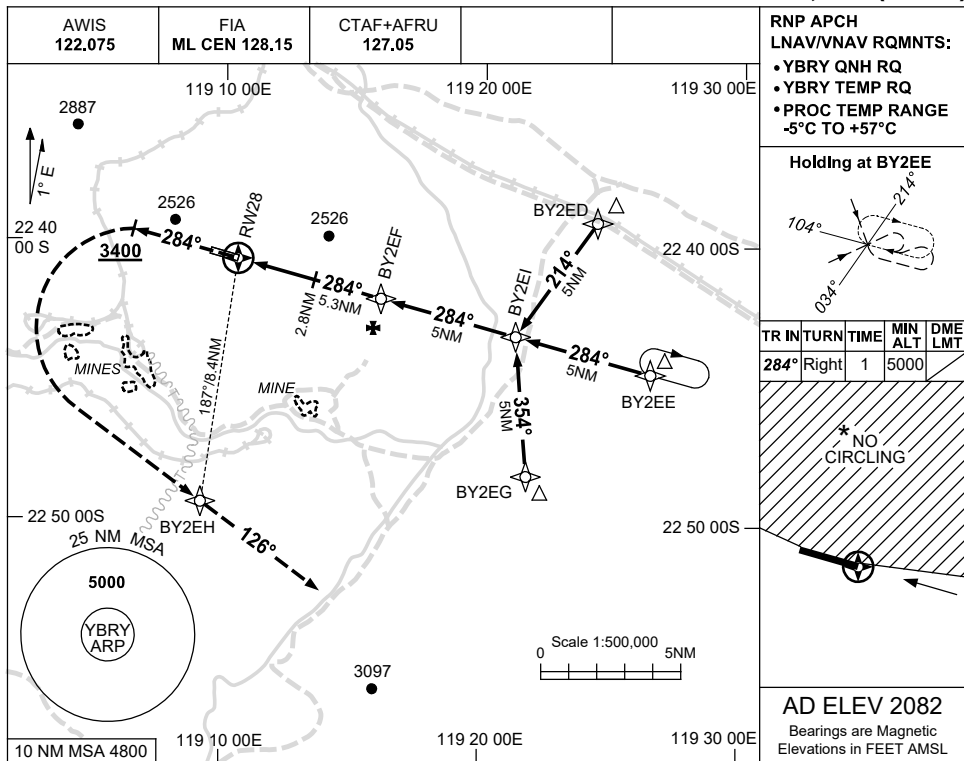


USE QNH

RNP RWY 28

21 MAR 2024

BARIMUNYA, WA (YBRY)



**NOTES**

1. MAX IAS:  
HOLDING : 185KT.  
INITIAL : 210KT.
- \* 2. NO CIRCLING N OF RWY 10/28.

CATEGORY	A	B	C	D
LNAV/VNAV	2500 (445-2.5)			NOT APPLICABLE
LNAV	2730 (675-3.8)			
CIRCLING *	3080 (998-2.4)		3240 (1158-4.0)	
ALTERNATE	(1498-4.4)		(1658-6.0)	

Changes: WPT NAMING, Editorial.

BRYGN02-178

