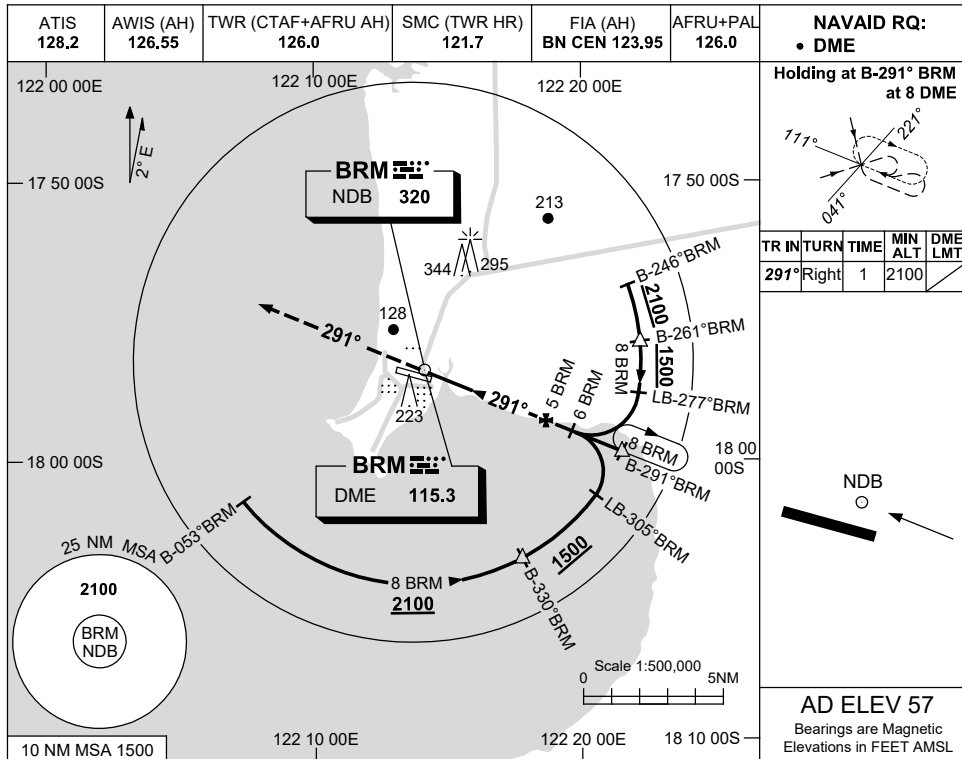


USE QNH

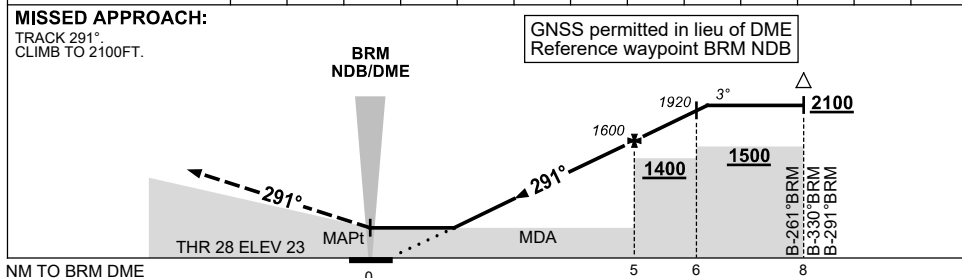
NDB-Z RWY 28

BROOME/INTL, WA (YBRM)

16 JUN 2022



DIST TO BRM DME	1.9	2	3	4	5	6	6.2						
ALT (3° APCH PATH)	600	650	970	1290	1600	1920	2000						



CATEGORY	A	B	C	D
S-I NDB/DME	600 (577-3.3)			
CIRCLING	650 (593-2.4)	840 (783-4.0)	850 (793-5.0)	
ALTERNATE	(1093-4.4)	(1283-6.0)	(1293-7.0)	

NOTES
1. HOLDING NOT CONTAINED IN CTA.

Changes: MAGNETIC TRACKS.

BRMNB02-171