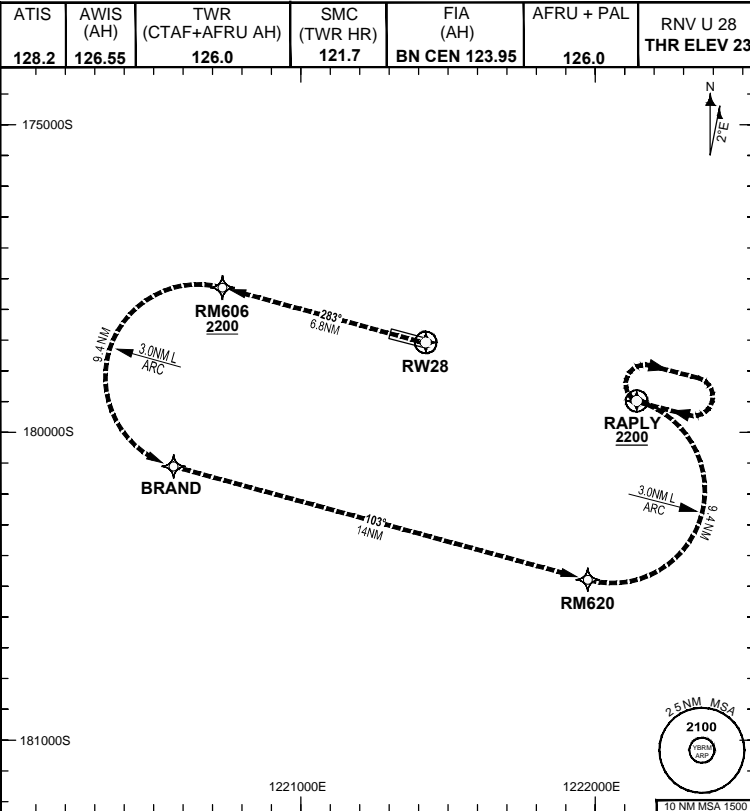


**FOR CASA APPROVED
OPERATORS ONLY**

8 SEP 2022

USE QNH

GE PROPRIETARY INFORMATION
GE PROPRIETARY RESERVED
COPYRIGHT © NAVERUS, INC. 2022. ALL RIGHTS RESERVED.



ATIS	AWIS (AH)	TWR (CTAF+AFRU AH)	SMC (TWR HR)	FIA (AH)	AFRU + PAL	RNV U 28 THR ELEV 23	RNP AR APCH - RF RQ - YBRM ACT QNH RQ - YBRM ACT TEMP RQ - PROC TEMP RANGE +8°C TO +42°C
128.2	126.55	126.0	121.7	BN CEN 123.95	126.0		Holding at RAPLY
TR		INTURN		TIME		MIN ALT	DME LMT
283°		Right		1'		2200	
							AD ELEV 57 Bearings are Magnetic Elevations in FEET AMSL

ENGINE OUT MISSED APPROACH:

If unable to cross RM606 at 2200FT, advise ATC, and climb to 2200FT via the RNP AR Engine Out Missed Approach track to RAPLY and hold as published.
 Acceleration altitude 1100FT QNH (1000FT AGL).
 Continue to climb in hold as necessary to 2200FT, or as directed by ATC. EO hold only. Maximum holding speed 230 KIAS.

DO NOT USE FOR NAVIGATION

Prepared by GE Aviation

