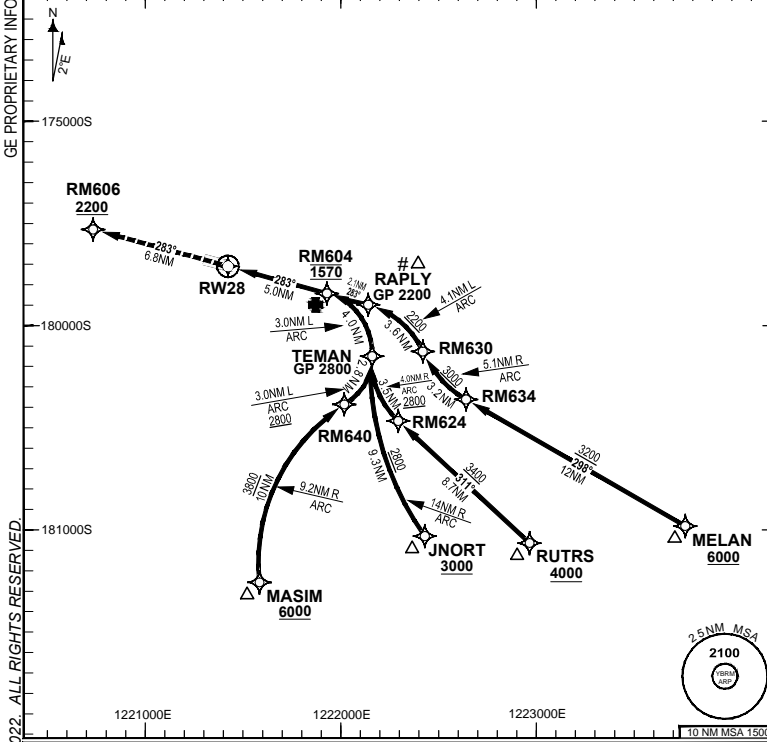


**FOR CASA APPROVED OPERATORS ONLY**

8 SEP 2022

USE QNH

ATIS	AWIS (AH)	TWR (CTAF+AFRU AH)	SMC (TWR HR)	FIA (AH)	AFRU + PAL	RNV U 28 THR ELEV 23	RNP AR APCH - RF RQ - YBRM ACT QNH RQ - YBRM ACT TEMP RQ - PROC TEMP RANGE +8°C TO +42°C
128.2	126.55	126.0	121.7	BN CEN 123.95	126.0		



Holding as directed by ATC

TR	INTURN	TIME	MIN ALT	DME LMT

AD ELEV 57  
Bearings are Magnetic Elevations in FEET AMSL

DISTANCE FM THR	RM604	RAPLY	TEMAN				
ALT (2.80° APCH PATH)	1570	2200	2800				

**MISSED APPROACH:**  
Climb to 2200FT or as directed by ATC via the RNP AR Missed Approach track to RM606. Acceleration altitude 1100FT QNH.

**ENGINE OUT MISSED APPROACH:**  
SEE PAGE 2

THR 28 ELEV 23

TCH 50FT

NM FM THR 6.8 0 5.0

**NOTES**

- Lateral transition to Missed Approach must not be initiated prior to DA/H PSN.
- APCH Path does not coincide with VGSI on glide slope indication.
- Latest point where the ACFT can join the PROC.
- Minimum MAP gradient (All Engines) for RNP 0.10 and RNP 0.30 is 4.4% to 2200FT.

CATEGORY	A	B	C
RNP (0.3)			DA(H) 331 (308-1.7)
RNP (0.1)			DA(H) 313 (290-1.5)
	N/A		
CIRCLING			NOT AUTHORISED
ALTERNATE			

Changes: TITLE, RNP AR NOTES, RNAV (RNP) to RNP AR BRMGN06-172

**DO NOT USE FOR NAVIGATION**

Prepared by GE Aviation

