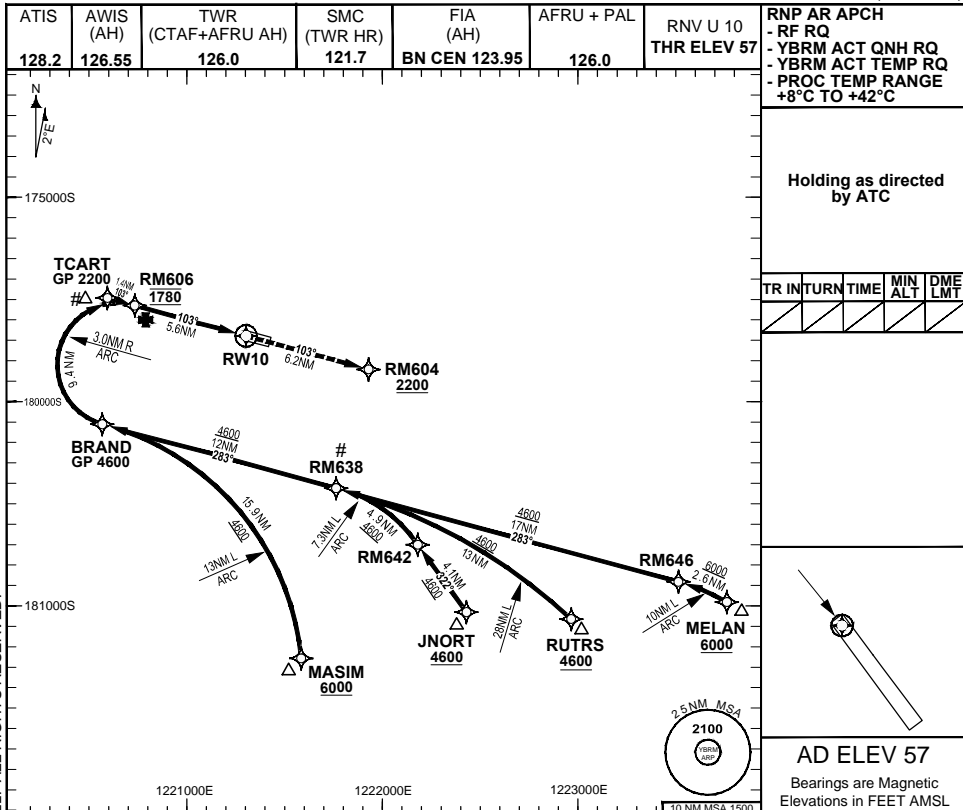


**FOR CASA APPROVED
OPERATORS ONLY
USE QNH**

8 SEP 2022

GE PROPRIETARY INFORMATION

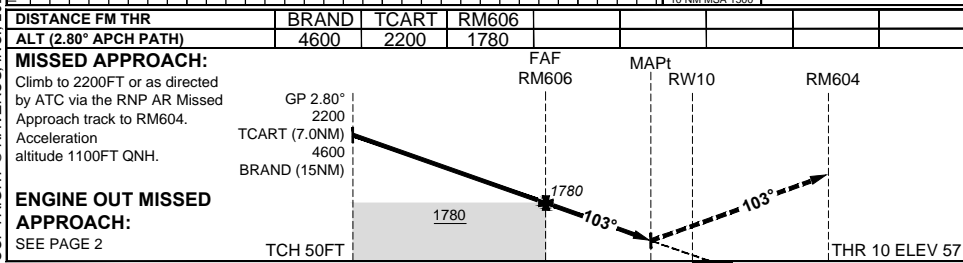
COPYRIGHT © NAVERUS, INC., 2022. ALL RIGHTS RESERVED.



Holding as directed by ATC

TR	INTURN	TIME	MIN ALT	DME LMT

AD ELEV 57
Bearings are Magnetic Elevations in FEET AMSL



NM FM THR

CATEGORY	A	B	C
RNP (0.3)			DA(H) 346 (289-1.5)
		N/A	
CIRCLING			NOT AUTHORISED
ALTERNATE			

- NOTES**
- Lateral transition to Missed Approach must not be initiated prior to DA/H PSN.
 - APCH Path does not coincide with VGSI on glide slope indication.
 - Latest point where the ACFT can join the PROC.
 - Minimum MAP gradient (All Engines) 4.8% to 2200FT.

Changes: TITLE, RNP AR NOTES, RNAV (RNP) to RNP AR BRMGN04-172

DO NOT USE FOR NAVIGATION
Prepared by GE Aviation

