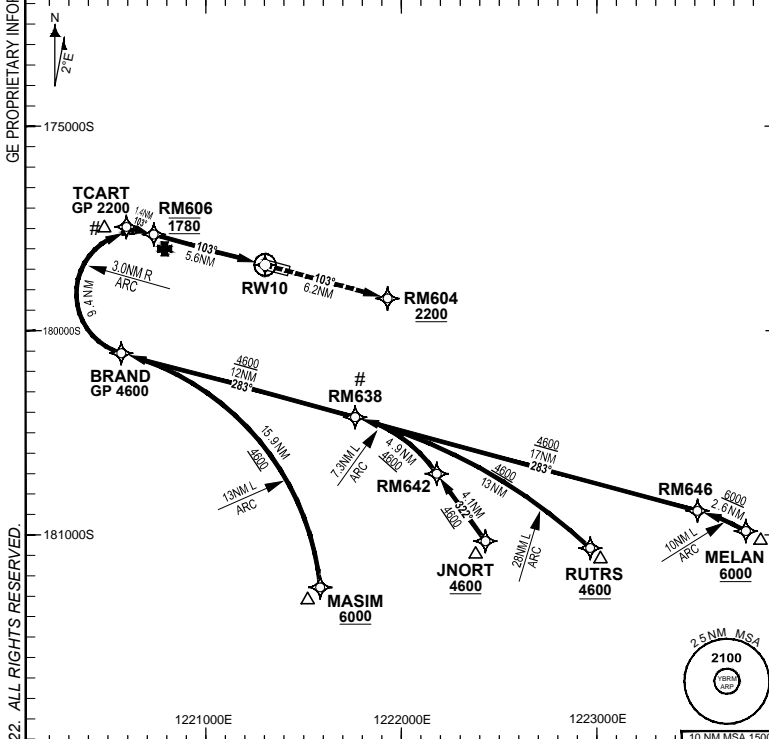


**FOR CASA APPROVED  
OPERATORS ONLY  
USE QNH**

**8 SEP 2022**

ATIS	AWIS (AH)	TWR (CTAF+AFRU AH)	SMC (TWR HR)	FIA (AH)	AFRU + PAL	RNP U 10 THR ELEV 57	RNP AR APCH - RF RQ - YBRM ACT QNH RQ - YBRM ACT TEMP RQ - PROC TEMP RANGE +8°C TO +42°C
128.2	126.55	126.0	121.7	BN CEN 123.95	126.0		



**Holding as directed by ATC**

TR	INTURN	TIME	MIN ALT	DME LMT

**AD ELEV 57**  
Bearings are Magnetic Elevations in FEET AMSL

<b>DISTANCE FM THR</b>	BRAND	TCART	RM606					
<b>ALT (2.80° APCH PATH)</b>	4600	2200	1780					

**MISSED APPROACH:**  
Climb to 2200FT or as directed by ATC via the RNP AR Missed Approach track to RM604.  
Acceleration altitude 1100FT QNH.

**ENGINE OUT MISSED APPROACH:**  
SEE PAGE 2

NM FM THR

**NOTES**

- Lateral transition to Missed Approach must not be initiated prior to DA/H PSN.
- APCH Path does not coincide with VGSI on glide slope indication.
- Latest point where the ACFT can join the PROC.
- Minimum MAP gradient (All Engines) 4.8% to 2200FT.

CATEGORY	A	B	C
RNP (0.3)			DA(H) <b>346</b> (289-1.5)
CIRCLING			NOT AUTHORISED
ALTERNATE			

Changes: TITLE, RNP AR NOTES, RNAV (RNP) to RNP AR BRMGN04-172

**DO NOT USE FOR NAVIGATION**

Prepared by GE Aviation

