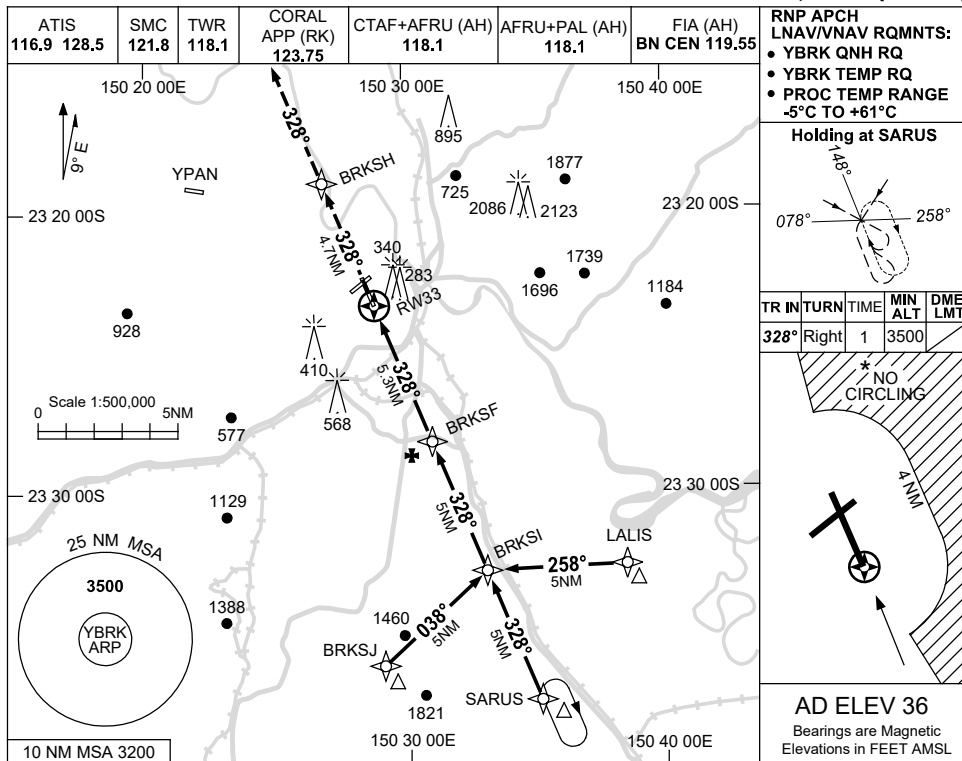


USE QNH

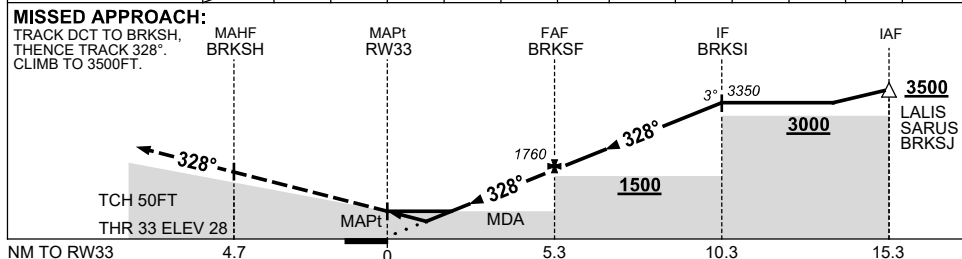
RNP RWY 33

1 DEC 2022

ROCKHAMPTON, QLD (YBRK)



NM TO NEXT WPT	RW33	1.3	1.8	2	3	4	5	BRKSF	1	2	3	4	BRKSI
ALT (3° APCH PATH)		490	660	710	1030	1350	1670	1760	2070	2390	2710	3030	3350



CATEGORY	A	B	C	D
LNAV/VNAV		490 (462-2.6)		
LNAV		660 (632-3.6)		
CIRCLING *	840 (804-2.4)		1080 (1044-4.0)	1080 (1044-5.0)
ALTERNATE	(1304-4.4)		(1544-6.0)	(1544-7.0)

- NOTES**
- MAX IAS:
INITIAL : 210KT.
 - NO CIRCLING BEYOND 4 NM EAST OF RWY 15/33.
 - HOLDING NOT CONTAINED IN CTA.

Changes: CORAL APP FREQUENCY.

BRKGN02-173