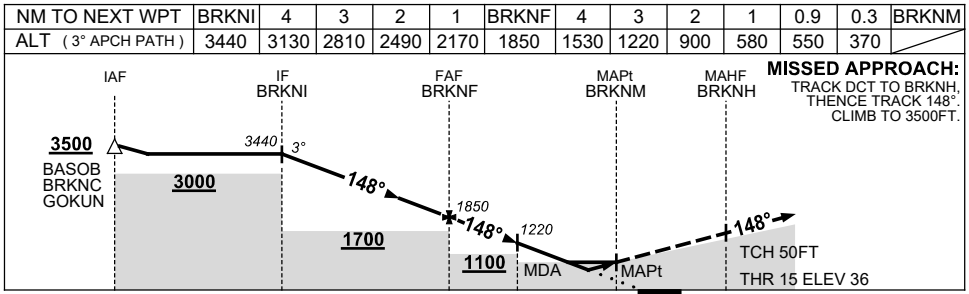
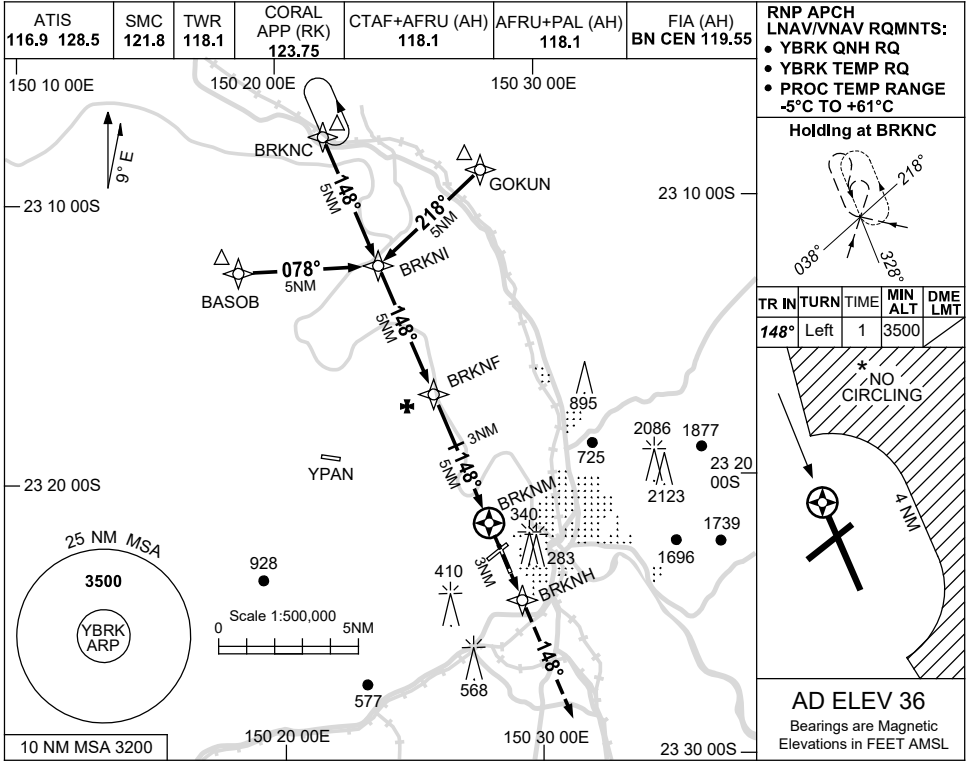


USE QNH

RNP RWY 15

1 DEC 2022

ROCKHAMPTON, QLD (YBRK)



**NOTES**

CATEGORY	A	B	C	D
LNAV/VNAV			370 (334-1.9)	
LNAV			550 (514-2.9)	
CIRCLING *	840 (804-2.4)		1080 (1044-4.0)	1080 (1044-5.0)
ALTERNATE	(1304-4.4)		(1544-6.0)	(1544-7.0)

1. MAX IAS:  
INITIAL : 210KT.
- \*2. NO CIRCLING  
BEYOND 4 NM  
EAST OF RWY 15/33.
3. HOLDING NOT  
CONTAINED IN CTA.

Changes: CORAL APP FREQUENCY.

BRKGN01-173