

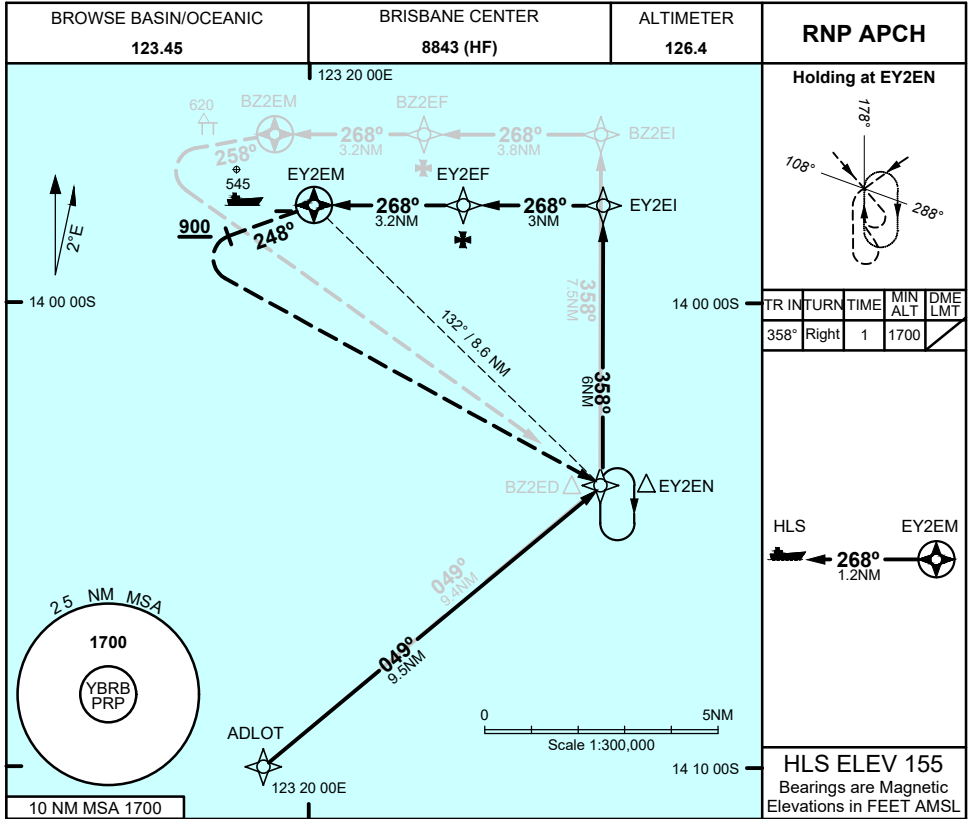
# FOR CASA APPROVED OPERATORS ONLY

## USE QNH

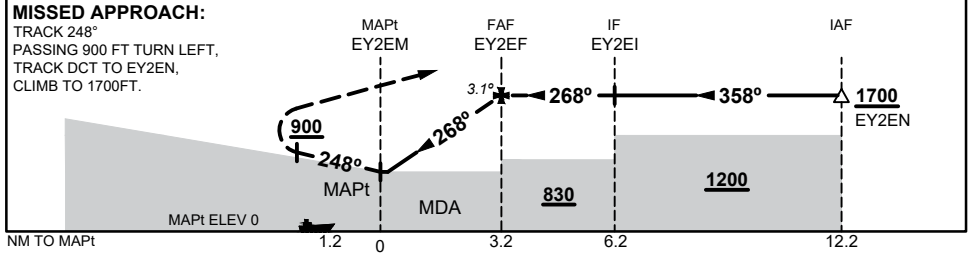
RNP Y 268

1 DEC 2022

**BROWSE BASIN, WA (YBRB)**



NM TO NEXT WPT	EY2EM	0.1	0.6	1	2	3	EY2EF			
ALT (3.1° APCH PATH)		680	830	980	1310	1630	1700			



CATEGORY	H
YBRB QNH (NON-VAA)	<b>680</b> (750 - 2.1)
AREA QNH (NON-VAA)	<b>830</b> (900 - 2.1)
ALTERNATE	(1400 - 4.1)

- NOTES**
- MAX IAS:  
- HOLDING: 90 KT
  - PRP (S13 57 09, E123 18 23)
  - HLS (S13 57 54, E123 18 54)
  - PRP EQUIVALENT TO ARP/HRP

Changes: LOGO, Editorial

BRBG04-173

# FOR CASA APPROVED OPERATORS ONLY

