

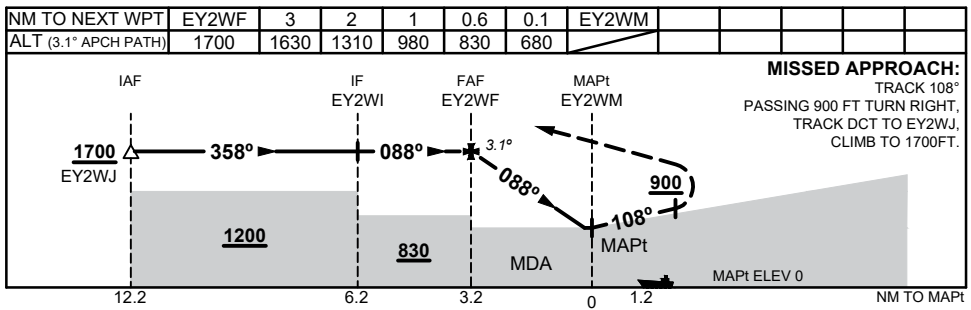
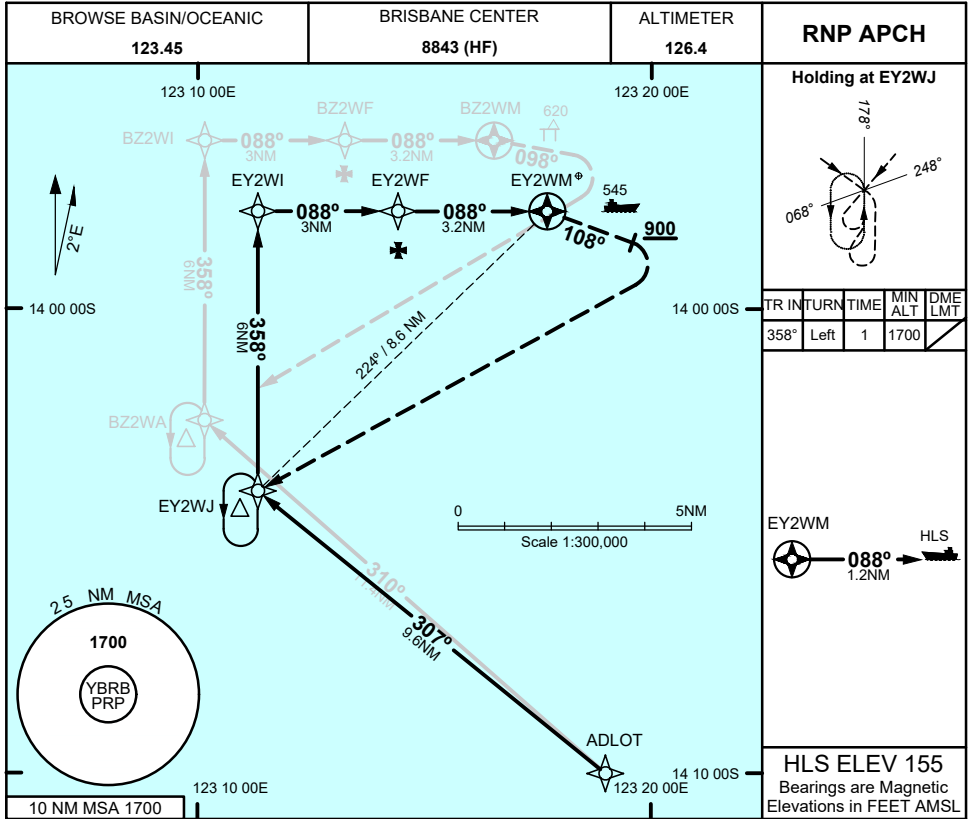
# FOR CASA APPROVED OPERATORS ONLY

## USE QNH

RNP Y 088

1 DEC 2022

**BROWSE BASIN, WA (YBRB)**



CATEGORY	H
YBRB QNH (NON-VAA)	<b>680</b> (680 - 2.1)
AREA QNH (NON-VAA)	<b>830</b> (830 - 2.1)
ALTERNATE	(1330 - 4.1)

- NOTES**
1. MAX IAS:  
- HOLDING: 90 KT
  2. PRP (S13 57 09, E123 18 23)
  3. HLS (S13 57 54, E123 18 54)
  4. PRP EQUIVALENT TO ARP/HRP

Changes: LOGO, Editorial

BRBGN02-173

# FOR CASA APPROVED OPERATORS ONLY