

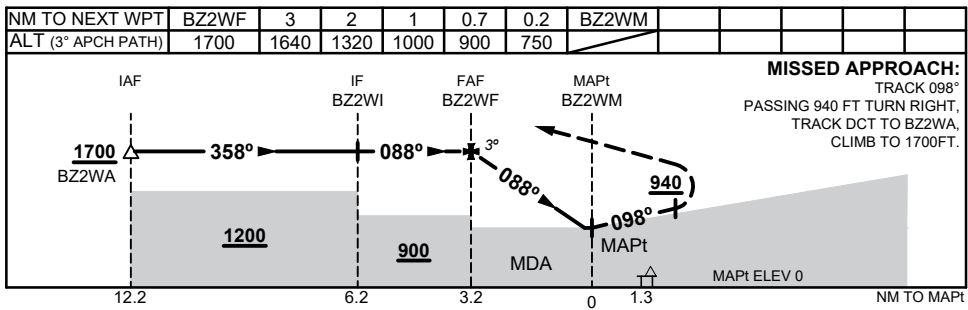
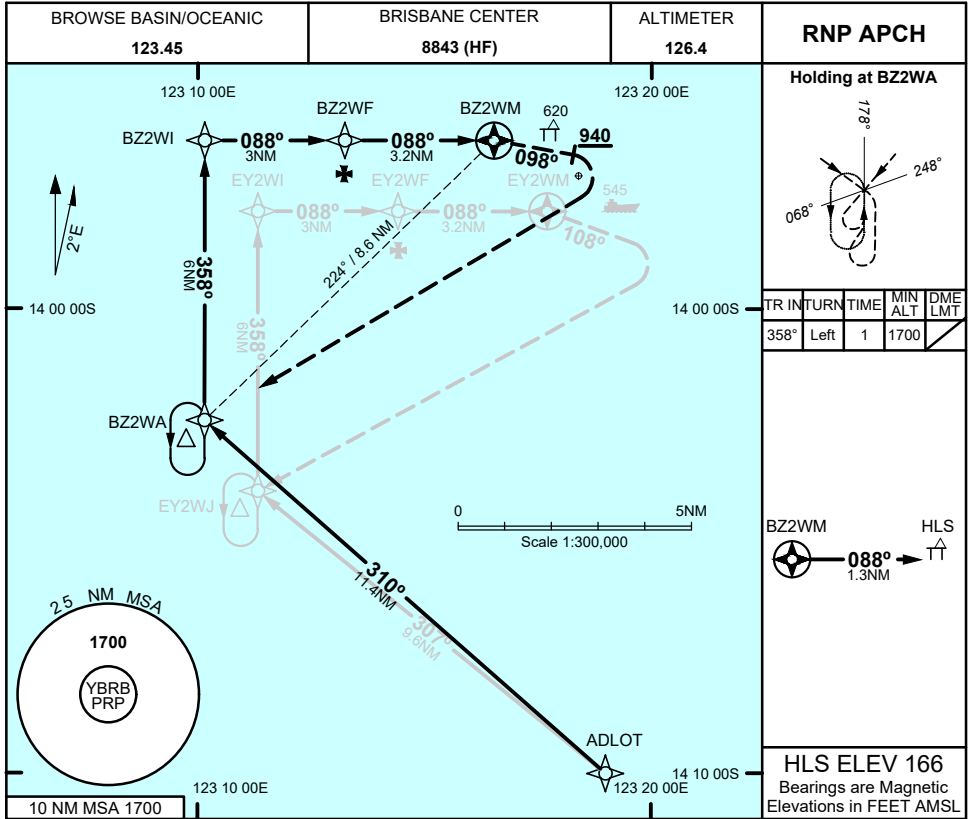
FOR CASA APPROVED OPERATORS ONLY

USE QNH

RNP Z 088

1 DEC 2022

BROWSE BASIN, WA (YBRB)



CATEGORY	H
YBRB QNH (NON-VAA)	750 (750 - 2.1)
AREA QNH (NON-VAA)	900 (900 - 2.1)
ALTERNATE	(1400 - 4.1)

- NOTES**
- MAX IAS:
- HOLDING: 90 KT
 - PRP (S13 57 09, E123 18 23)
 - HLS (S13 56 23, E123 17 53)
 - PRP EQUIVALENT TO ARP/HRP

Changes: LOGO, Editorial

BRBG01-173

FOR CASA APPROVED OPERATORS ONLY