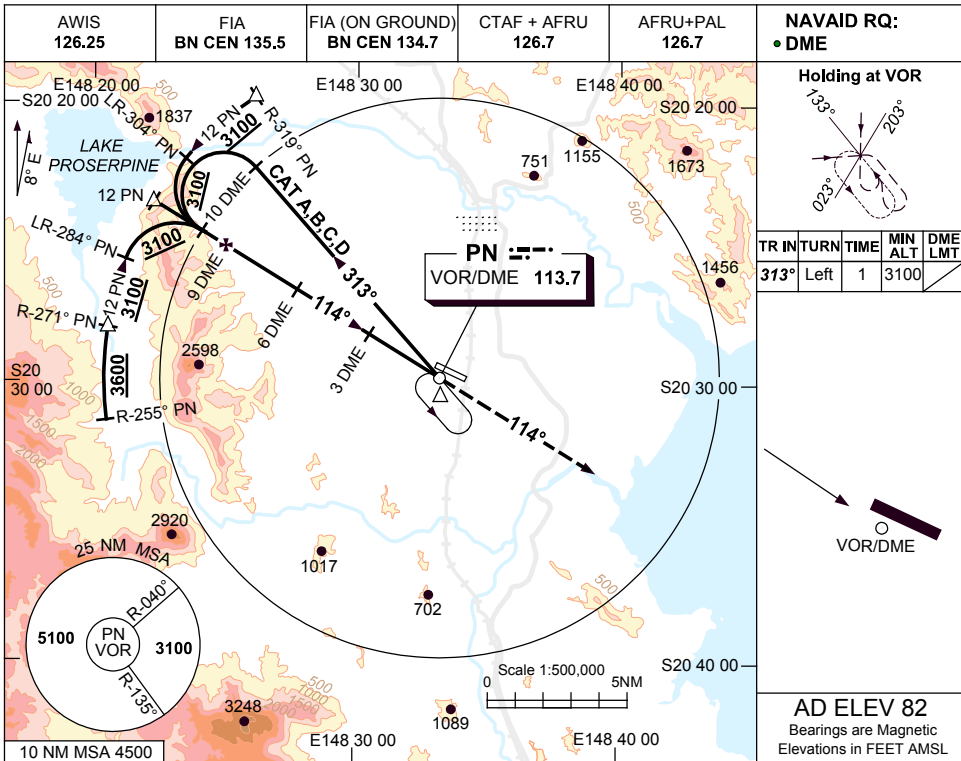
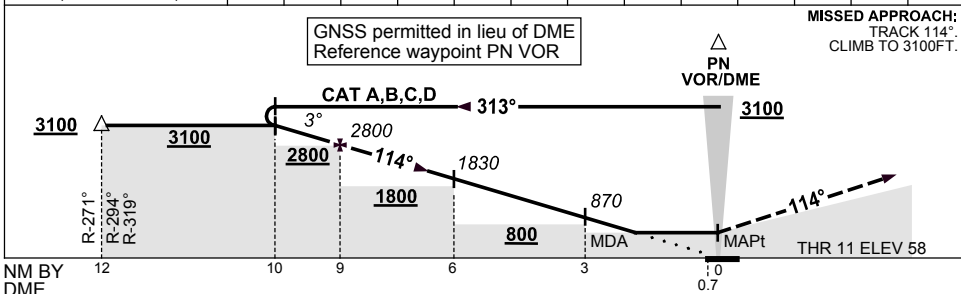


USE QNH VOR RWY 11
PROSERPINE/WHITSUNDAY COAST, QLD (YBPN)

9 NOV 2017



DIST BY DME	10	9	8	7	6	5	4	3	2.4				
ALT (3° APCH PATH)	3100	2800	2470	2150	1830	1510	1190	870	680				



CATEGORY	A	B	C	D
S-I VOR/DME	680 (622-3.5)			
CIRCLING	800 (718-2.4)	1030 (948-4.0)	1420 (1338-5.0)	
ALTERNATE	(1218-4.4)	(1448-6.0)	(1838-7.0)	

- NOTES**
- MAX IAS: INITIAL : 210KT.
 - COLOUR: SEE SPEC NOTICES.

Changes: CAT D, CIRCLING & ALTN MNM. BPNV001-153