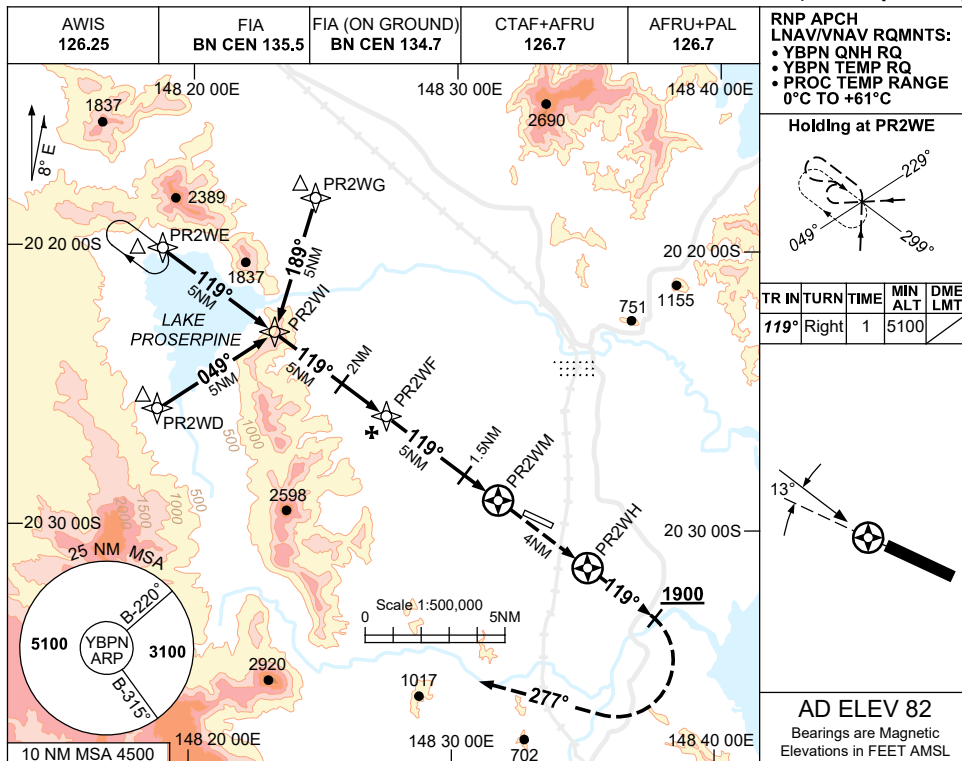


USE QNH

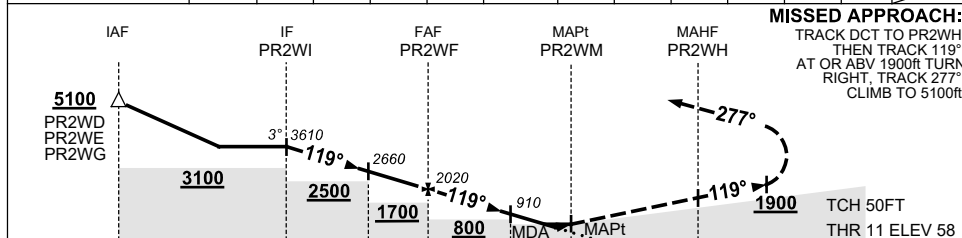
RNP RWY 11

21 MAR 2024

PROSERPINE/WHITSUNDAY COAST, QLD (YBPN)



NM TO NEXT WPT	PR2WI	4	3	2	1	PR2WF	4	3	2	1.5	0.8	0.4	PR2WM
ALT (3° APCH PATH)	3610	3300	2980	2660	2340	2020	1700	1380	1070	910	680	560	



**MISSED APPROACH:**  
 TRACK DCT TO PR2WH,  
 THEN TRACK 119°  
 AT OR ABV 1900FT TURN  
 RIGHT, TRACK 277°  
 CLIMB TO 5100ft.

NM TO PR2WM	15	10	7	5	1.5	0	1.0	4
-------------	----	----	---	---	-----	---	-----	---

NOTES

- MAX IAS:  
 INITIAL : 210KT.  
 MAP TURN : 200KT.
- HOLDING OVERLAPS WITH YBWN RNP S HOLDING. ACFT SEPARATION NOT ASSURED.
- COLOUR: SEE SPEC NOTICES.

CATEGORY	A	B	C	D
LNAV/VNAV	560 (502-2.8)			
LNAV	680 (622-3.5)			
CIRCLING	800 (718-2.4)	1030 (948-4.0)	1420 (1338-5.0)	
ALTERNATE	(1218-4.4)	(1448-6.0)	(1838-7.0)	

Changes: NOTES.

BPNGN02-178