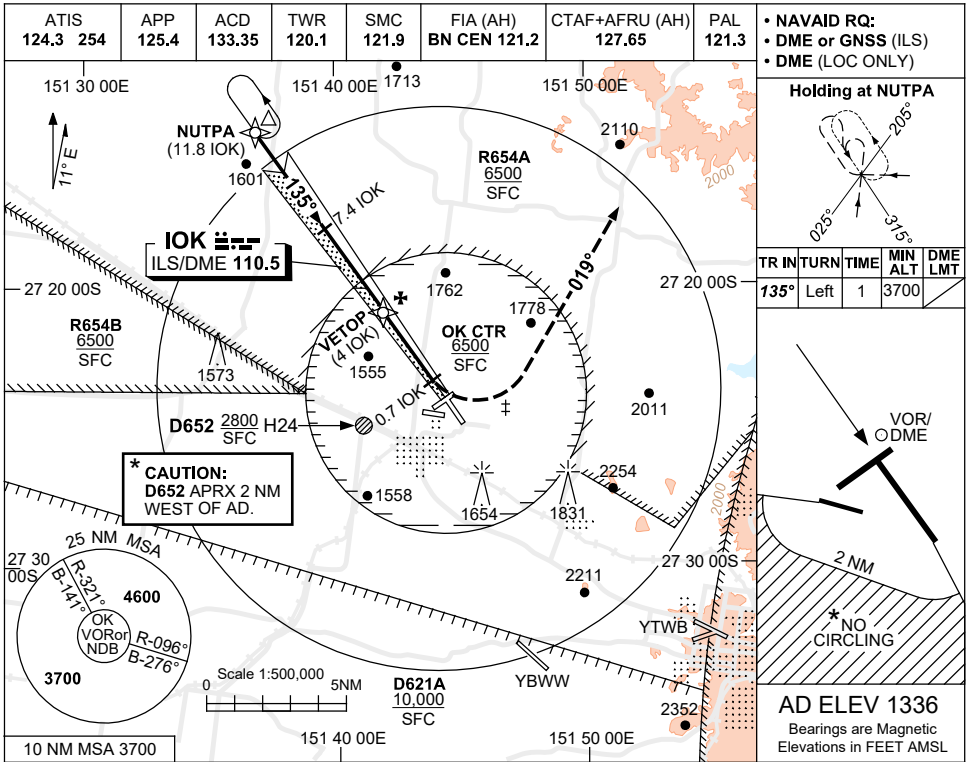


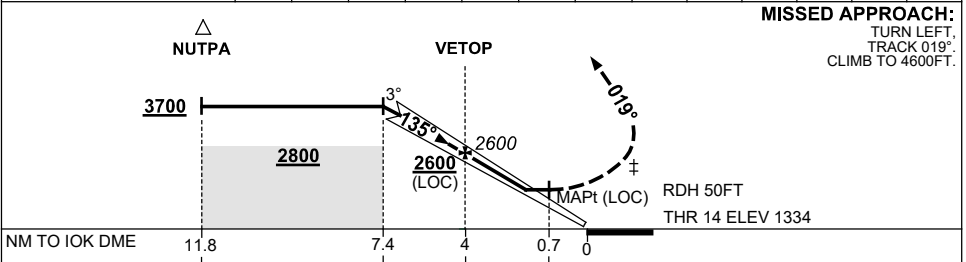
USE QNH

ILS-Z or LOC-Z RWY 14  
**Oakey, QLD (YBOK)**

16 JUN 2022



DIST TO IOK DME	7.4	7	6	5	4	3	2.1						
ALT (3° APCH PATH)	3700	3560	3240	2930	2600	2290	1990						



CATEGORY	A	B	C	D
S-I ILS (2.5% MAP)		1920 (586-3.3)		NOT APPLICABLE
S-I ILS (5.4% MAP)		1690 (356-2.0)		
S-I LOC		1990 (654-3.7)		
CIRCLING *	2170 (834-2.4)	2470 (1134-4.0)		
ALTERNATE	(1334-4.4)		(1634-6.0)	

**NOTES**

- MAX IAS :  
HOLDING: 180KT.  
INITIAL : 180KT.  
‡ MAP TURN: 170KT.
- NO CIRCLING SW OF RWY 09/27 AND RWY 14/32 BEYOND 2NM.
- CAUTION: PROC OVERLAID BY YTWB RNP RWY 11.

Changes: OK CTR, R654A AND R654B, Editorial.

BOKII01-171