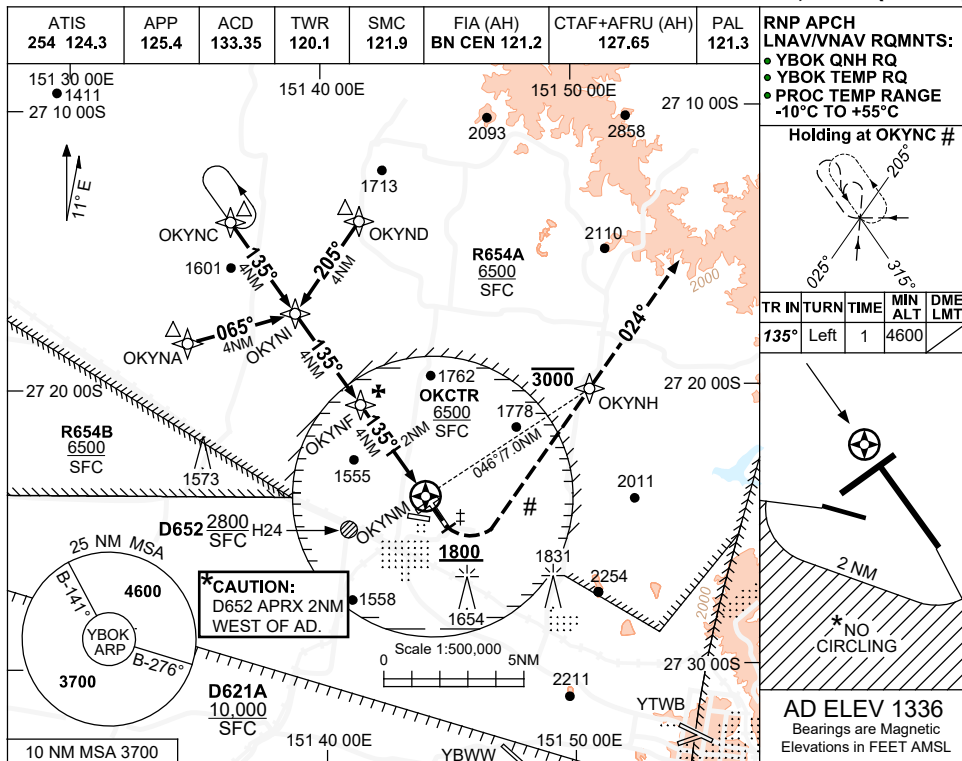
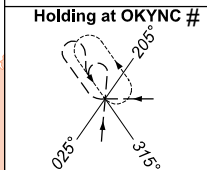


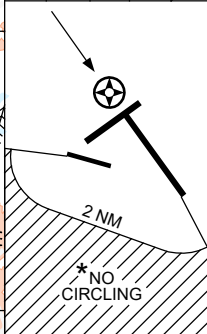
16 JUN 2022



RNP APCH  
 LNAV/VNAV RQMNTS:  
 • YBOK QNH RQ  
 • YBOK TEMP RQ  
 • PROC TEMP RANGE  
 -10°C TO +55°C

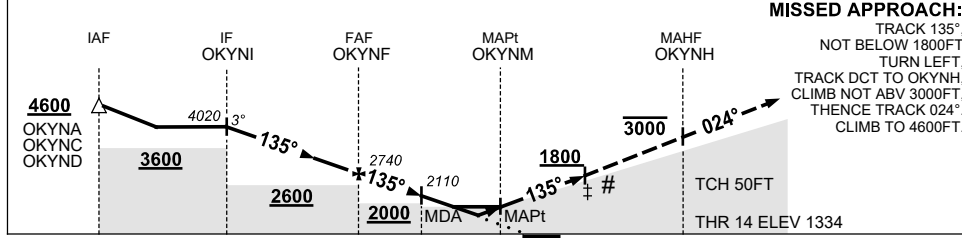


TR	INTURN	TIME	MIN ALT	DME LMT
135°	Left	1	4600	



AD ELEV 1336  
 Bearings are Magnetic  
 Elevations in FEET AMSL

NM TO NEXT WPT	OKYNI	3	2	1	OKYNF	3	2	1.2	0.6	OKYNM
ALT (3° APCH PATH)	4020	3700	3380	3060	2740	2430	2110	1860	1670	



**MISSED APPROACH:**  
 TRACK 135°, NOT BELOW 1800FT  
 TURN LEFT, TRACK DCT TO OKYNH,  
 CLIMB NOT ABV 3000FT,  
 THENCE TRACK 024°, CLIMB TO 4600FT.

NM TO OKYNM

NM TO OKYNM	12	8	4	2	0.3	7
IAF	OKYNA OKYNC OKYND					
IF	OKYNI					
FAF	OKYNF					
MAPt	OKYNM					
MAHF	OKYNH					

**NOTES**  
 1. MAX IAS:  
 INITIAL : 200KT.  
 ‡ MAP TURN: 180KT.  
 2. CAUTION: YTWB RNP RWY 11 NPA OVERLIES THIS PROCEDURE.  
 \* 3. NO CIRCLING SW OF RWY 09/27 AND RWY 14/32 BEYOND 2NM.  
 # 4. PROC MAY NOT BE CONTAINED IN CTA.

CATEGORY	A	B	C	D
LNAV/VNAV		1670 (336-1.9)		NOT APPLICABLE
LNAV		1860 (524-3.0)		
CIRCLING *	2170 (834-2.4)		2470 (1134-4.0)	
ALTERNATE	(1334-4.4)		(1634-6.0)	

Changes: OK CTR, R654A AND R654B. BOKGN01-171