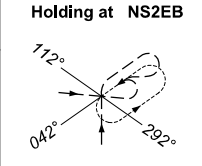
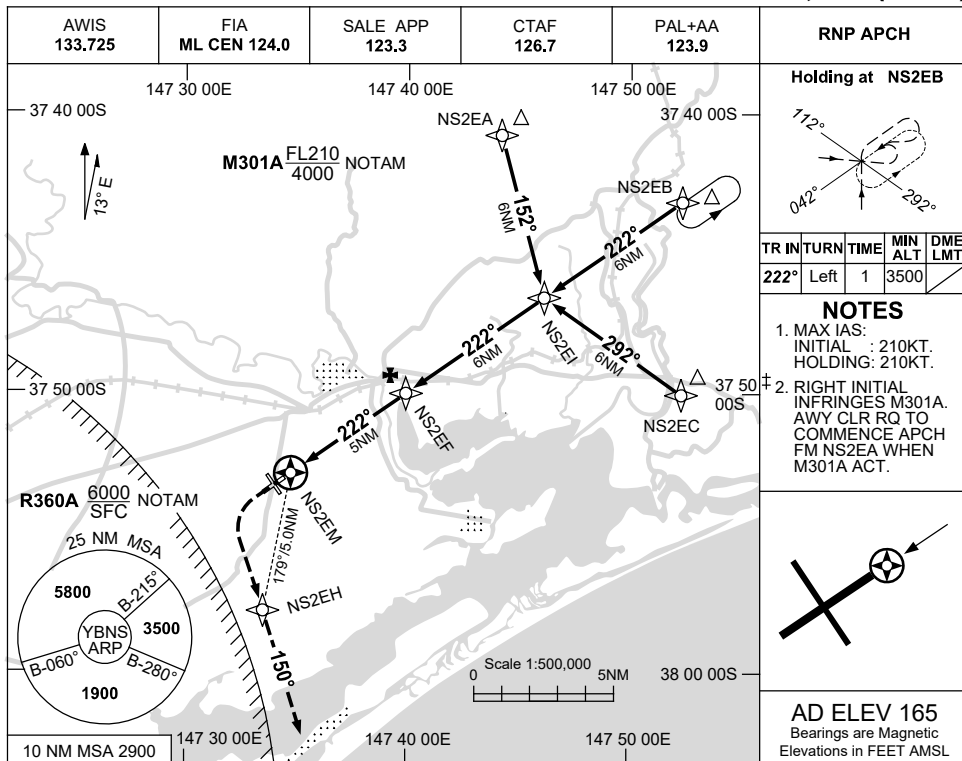


USE QNH

RNP RWY 22

BAIRNSDALE, VIC (YBNS)

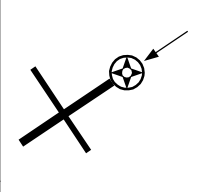
21 MAR 2024



TR	IN TURN	TIME	MIN ALT	DME LMT
222°	Left	1	3500	

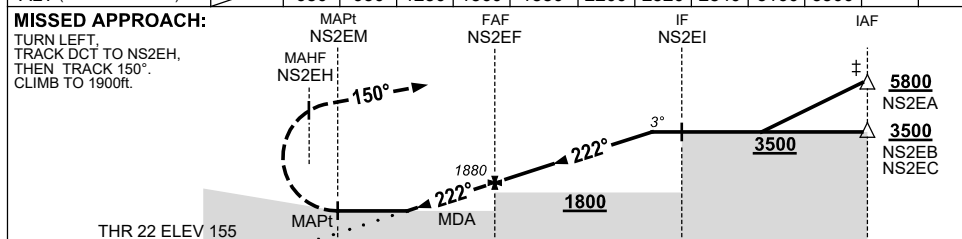
**NOTES**

- MAX IAS:  
INITIAL : 210KT.  
HOLDING: 210KT.
- RIGHT INITIAL INFRINGES M301A. AWY CLR RQ TO COMMENCE APCH FM NS2EA WHEN M301A ACT.



**AD ELEV 165**  
Bearings are Magnetic  
Elevations in FEET AMSL

NM TO NEXT WPT	NS2EM	1.2	2	3	4	NS2EF	1	2	3	4	5.1		
ALT (3° APCH PATH)	680	930	1250	1560	1880	2200	2520	2840	3160	3500			



**NOTES**

- WHEN EAST SALE R AREAS ACTIVE, COM RQ WITH ES APP PRIOR TO COMMENCEMENT OF PROC.
- YMES RNP RWY 22 AND RAAF KELAN HLDG PATTERNS OVERLAY PROC AT 4500FT AND 3500FT.

CATEGORY	A	B	C	D
LNAV	680 (525-3.0)			NOT APPLICABLE
CIRCLING	860 (695-2.4)	960 (795-4.0)		
ALTERNATE	(1195-4.4)		(1295-6.0)	

Changes: GLIDING SYMBOL REMOVED, Editorial.

BNSGN01-178